

# LGR6 antibody

Catalog Number: 112212

## Product name

LGR6 antibody

WB: 1:200-1:1000

IHC: 1:20-1:200

## Specificity

Human, Mouse, Rat; other species not tested.

## Antibody description

LGR6 Rabbit Polyclonal antibody. Positive WB detected in mouse testis tissue, human brain tissue, mouse ovary tissue, PC-3 cells. Positive IHC detected in human testis tissue, human ovary tissue, human skin tissue, human spleen tissue. Positive FC detected in HeLa cells. Observed molecular weight by Western-blot: 104 kDa

## Preparation

This antibody was obtained by immunization of LGR6 recombinant protein (Accession Number: NM\_021636). Purification method: Antigen affinity purified.

## Formulation

PBS with 0.02% sodium azide and 50% glycerol pH 7.3.

## Storage

Store at -20°C. DO NOT ALIQUOT

## Clonality

Polyclonal

## Ig Type

Rabbit IgG

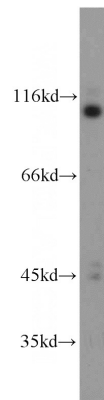
## Applications

ELISA, IHC, WB, FC

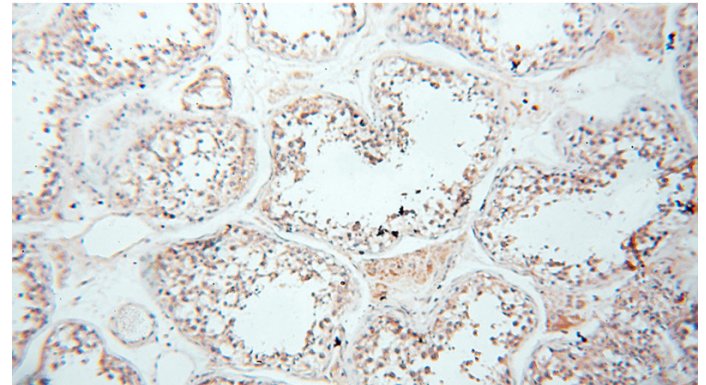
## Dilutions

Recommended Dilution:

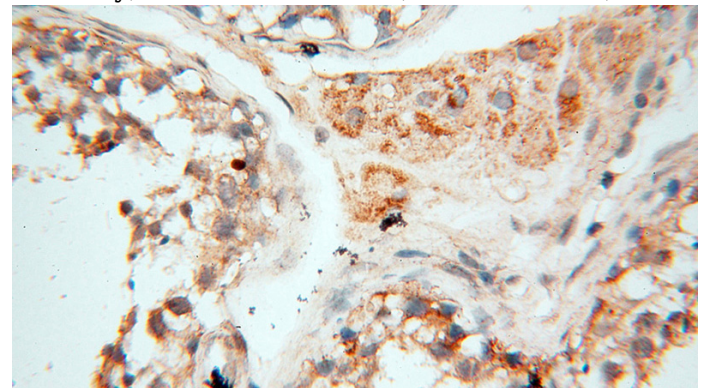
## Validations



mouse testis tissue were subjected to SDS PAGE followed by western blot with Catalog No:112212(LGR6 antibody) at dilution of 1:100



Immunohistochemical of paraffin-embedded human testis using Catalog No:112212(LGR6 antibody) at dilution of 1:50 (under 10x lens)



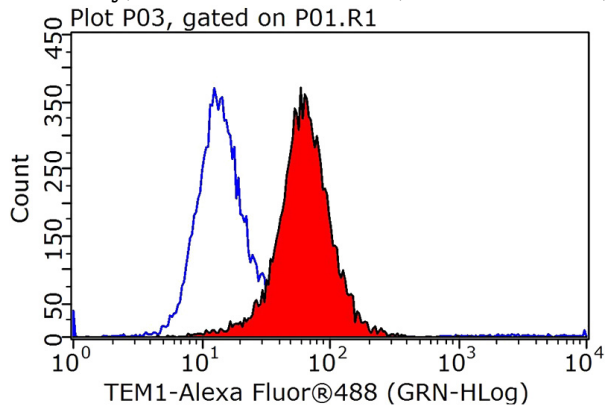
Immunohistochemical of paraffin-embedded human testis using Catalog No:112212(LGR6

# LGR6 antibody



Catalog Number: 112212

antibody) at dilution of 1:50 (under 40x lens)



1X10<sup>6</sup> HeLa cells were stained with 0.2ug LGR6 antibody (Catalog No:112212, red) and control antibody (blue). Fixed with 90% MeOH blocked with 3% BSA (30 min). Alexa Fluor 488-conjugated AffiniPure Goat Anti-Rabbit IgG(H+L) with dilution 1:1000.