

EFTUD1 antibody

Catalog Number: 110212

Product name

EFTUD1 antibody

Specificity

Human, Mouse, Rat; other species not tested.

Antibody description

EFTUD1 Rabbit Polyclonal antibody. Positive WB detected in mouse brain tissue, fetal human brain tissue. Positive IHC detected in human kidney tissue. Observed molecular weight by Western-blot: 125-135 kDa

Preparation

This antibody was obtained by immunization of EFTUD1 recombinant protein (Accession Number: NM_001322845). Purification method: Antigen affinity purified.

Formulation

PBS with 0.1% sodium azide and 50% glycerol pH 7.3.

Storage

Store at -20°C. DO NOT ALIQUOT

Clonality

Polyclonal

Ig Type

Rabbit IgG

Applications

ELISA, WB, IHC

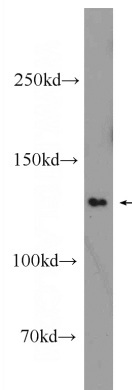
Dilutions

Recommended Dilution:

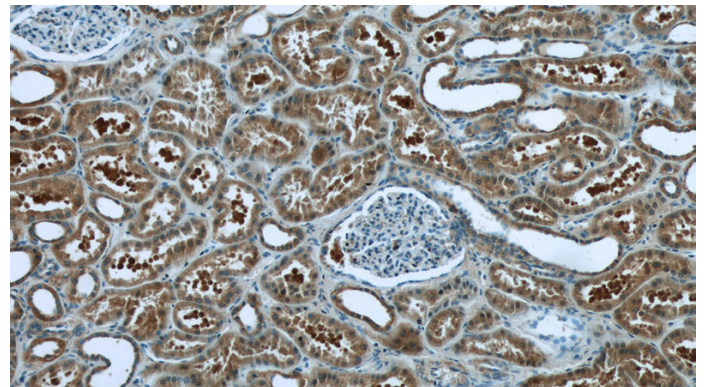
WB: 1:500-1:5000

IHC: 1:20-1:200

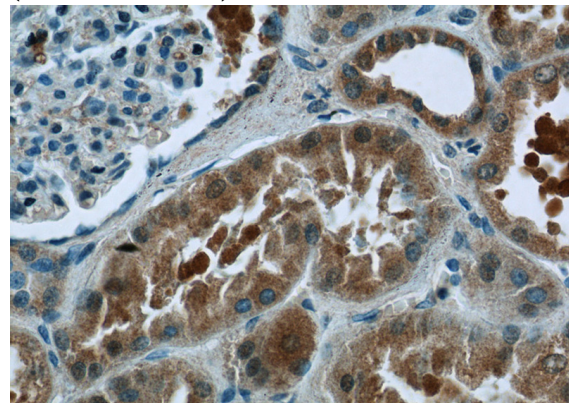
Validations



mouse brain tissue were subjected to SDS PAGE followed by western blot with Catalog No:110212(EFTUD1 Antibody) at dilution of 1:1000



Immunohistochemistry of paraffin-embedded human kidney tissue slide using Catalog No:110212(EFTUD1 Antibody) at dilution of 1:50 (under 10x lens)



Immunohistochemistry of paraffin-embedded human kidney tissue slide using Catalog

EFTUD1 antibody



Catalog Number: 110212

No:110212(EFTUD1 Antibody) at dilution of 1:50 (under 40x lens)