

MYBBP1A antibody



Catalog Number: 112912

Product name

MYBBP1A antibody

WB: 1:500-1:5000

IP: 1:200-1:2000

Specificity

Human; other species not tested.

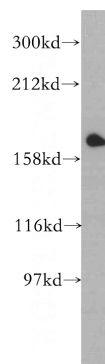
IHC: 1:20-1:200

IF: 1:20-1:200

Antibody description

MYBBP1A Rabbit Polyclonal antibody. Positive FC detected in HepG2 cells. Positive IHC detected in human kidney tissue. Positive IF detected in HepG2 cells. Positive WB detected in HeLa cells, HEK-293 cells. Positive IP detected in HEK-293 cells. Observed molecular weight by Western-blot: 160kd

Validations



Preparation

This antibody was obtained by immunization of MYBBP1A recombinant protein (Accession Number: NM_014520). Purification method: Antigen affinity purified.

HeLa cells were subjected to SDS PAGE followed by western blot with Catalog No:112912(MYBBP1A antibody) at dilution of

Formulation

PBS with 0.02% sodium azide and 50% glycerol pH 7.3.

Storage

Store at -20°C. DO NOT ALIQUOT

Clonality

Polyclonal

Ig Type

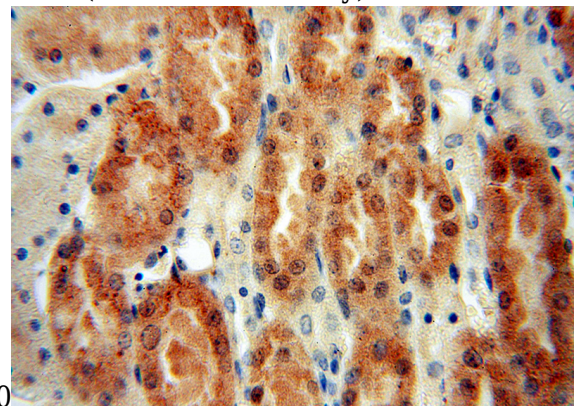
Rabbit IgG

Applications

ELISA, WB, IHC, IF, FC, IP

Dilutions

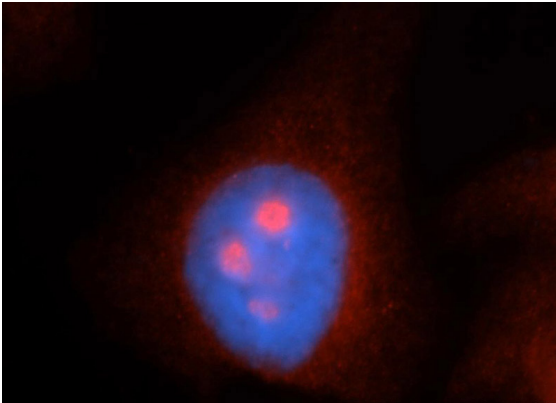
Recommended Dilution:



Immunohistochemical of paraffin-embedded human kidney using Catalog No:112912(MYBBP1A antibody) at dilution of 1:100 (under 40x lens)

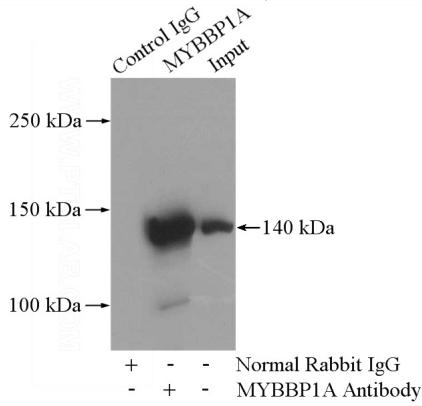
MYBBP1A antibody

Catalog Number: 112912

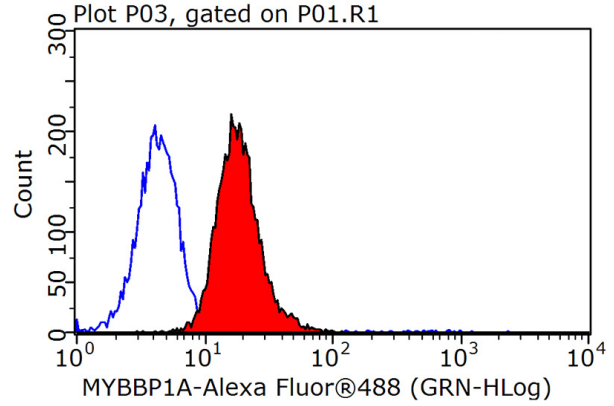


Immunofluorescent analysis of HepG2 cells, using MYBBP1A antibody Catalog No:112912 at 1:50 dilution and Rhodamine-labeled goat anti-rabbit IgG (red). Blue pseudocolor = DAPI (fluorescent

DNA dye).



IP Result of anti-MYBBP1A (IP:Catalog No:112912, 4ug; Detection:Catalog No:112912 1:500) with HEK-293 cells lysate 2800ug.



1X10⁶ HepG2 cells were stained with 0.2ug MYBBP1A antibody (Catalog No:112912, red) and control antibody (blue). Fixed with 90% MeOH blocked with 3% BSA (30 min). Alexa Fluor 488-conjugated AffiniPure Goat Anti-Rabbit IgG(H+L) with dilution 1:1500.