

Product name

Anti-PLEC antibody

Specificity

Human, Mouse, Rat

Antibody description

Rabbit monoclonal antibody to PLEC

Preparation

This antigen of this antibody was recombinant protein within c-terminal human plectin.

Formulation

Liquid, 1*TBS (pH7.4), 0.05% BSA, 40% Glycerol.
Preservative: 0.05% Sodium Azide.

Storage

Store at +4°C after thawing. Aliquot store at -20°C or -80°C. Avoid repeated freeze / thaw cycles.

Clonality

Monoclonal

Ig Type

Rabbit IgG

Applications

WB, IHC-P, IP

Dilutions

WB: 1:1,000

IHC-P: 1:100-1:500

Validations

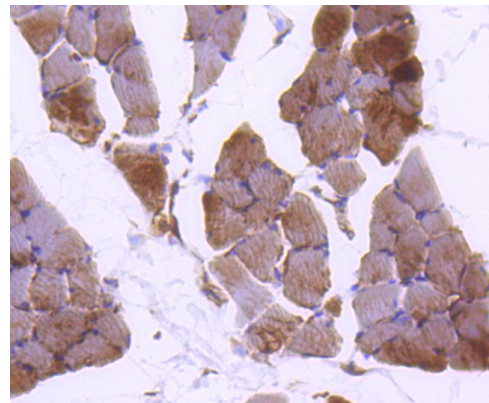


Fig1:: Immunohistochemical analysis of paraffin-embedded rat skeletal muscle tissue using anti-Plectin antibody. The section was pre-treated using heat mediated antigen retrieval with Tris-EDTA buffer (pH 8.0-8.4) for 20 minutes. The tissues were blocked in 5% BSA for 30 minutes at room temperature, washed with ddH₂O and PBS, and then probed with the primary antibody (1/50) for 30 minutes at room temperature. The detection was performed using an HRP conjugated compact polymer system. DAB was used as the chromogen. Tissues were counterstained with hematoxylin and mounted with DPX.

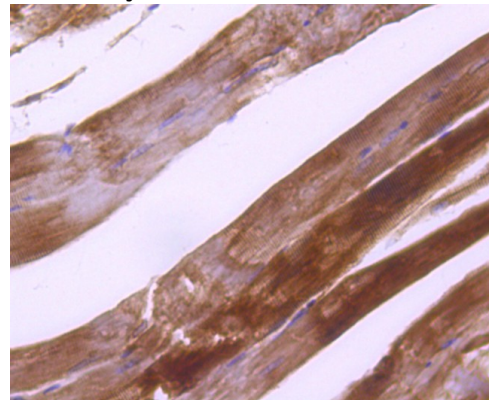


Fig2:: Immunohistochemical analysis of paraffin-embedded mouse skeletal muscle tissue using anti-Plectin antibody. The section was pre-treated using heat mediated antigen retrieval with Tris-EDTA buffer (pH 8.0-8.4) for 20 minutes. The tissues were blocked in 5% BSA for 30 minutes at room temperature, washed with ddH₂O and PBS, and then probed with the primary antibody (1/50) for 30 minutes at room temperature. The detection was performed using an HRP conjugated compact polymer system. DAB was used as the

Anti-PLEC antibody



Catalog Number: 176512

chromogen. Tissues were counterstained with hematoxylin and mounted with DPX.