

# Anti-Igsf8 antibody



Catalog Number: 175512

## Product name

Anti-Igsf8 antibody

## Specificity

Human, Mouse, Rat, Pig, Cow, Horse

## Antibody description

Rabbit polyclonal antibody to Igsf8

## Preparation

This antigen of this antibody was klh conjugated synthetic peptide derived from mouse igsf8 101-200/611

## Formulation

Liquid, 0.01M TBS(pH7.4) with 1% BSA, 0.03% Proclin300 and 50% Glycerol.

## Storage

Store at -20°C for one year. Avoid repeated freeze/thaw cycles. The lyophilized antibody is stable at room temperature for at least one month and for greater than a year when kept at -20°C. When reconstituted in sterile pH 7.4 0.01M PBS or diluent of antibody the antibody is stable for at least two weeks at 2-4°C.

## Clonality

Polyclonal

## Ig Type

Rabbit IgG

## Applications

WB, FC

## Dilutions

WB:1:500-2000

FC:1ug/Test

## Validations

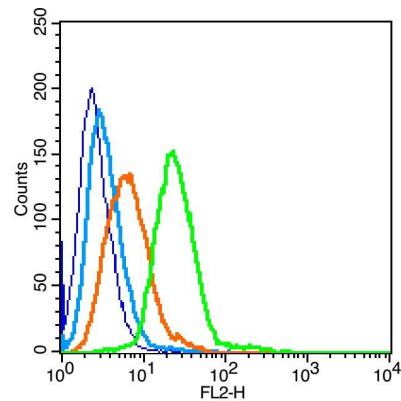


Fig1: Blank control(blue):Raji (fixed with 2% paraformaldehyde (10 min)).; Primary Antibody:Rabbit Anti-IGSF8 antibody , Dilution: 1µg in 100 µL 1X PBS containing 0.5% BSA;; Isotype Control Antibody: Rabbit IgG(orange), used under the same conditions );; Secondary Antibody: Goat anti-rabbit IgG-PE(white blue), Dilution: 1:200 in 1 X PBS containing 0.5% BSA.

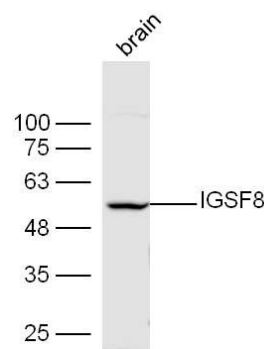


Fig2: Sample: Brain(Mouse) lysate at 30ug;; Primary: Anti-IGSF8 at 1:300 dilution;; Secondary: HRP conjugated Goat-Anti-rabbit IgG(bs-0295G-HRP) at 1: 5000 dilution ;; Predicted band size: 62 kD; Observed band size: 55 kD