

# SEPN1 antibody

Catalog Number: 115112

## Product name

SEPN1 antibody

## Specificity

Human, Mouse; other species not tested.

## Antibody description

SEPN1 Rabbit Polyclonal antibody. Positive IHC detected in human stomach tissue, human heart tissue, human skeletal muscle tissue. Positive WB detected in A549 cells. Observed molecular weight by Western-blot: 70 kDa

## Preparation

This antibody was obtained by immunization of Peptide (Accession Number: NM\_020451). Purification method: Antigen affinity purified.

## Formulation

PBS with 0.02% sodium azide and 50% glycerol pH 7.3.

## Storage

Store at -20°C. DO NOT ALIQUOT

## Clonality

Polyclonal

## Ig Type

Rabbit IgG

## Applications

ELISA, WB, IHC

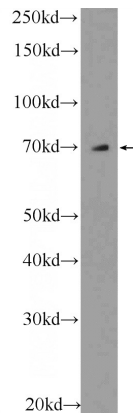
## Dilutions

Recommended Dilution:

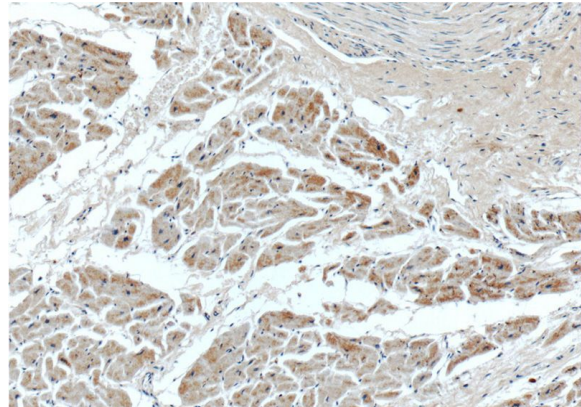
WB: 1:200-1:1000

IHC: 1:20-1:200

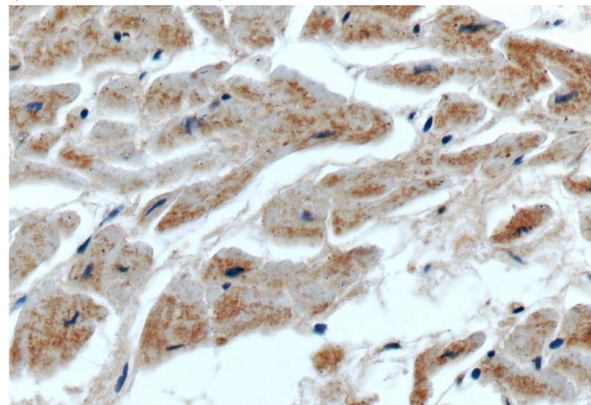
## Validations



A549 cells were subjected to SDS PAGE followed by western blot with Catalog No:115112(SEPN1 Antibody) at dilution of 1:300



Immunohistochemistry of paraffin-embedded human heart tissue slide using Catalog No:115112(SEPN1 Antibody) at dilution of 1:50 (under 10x lens)



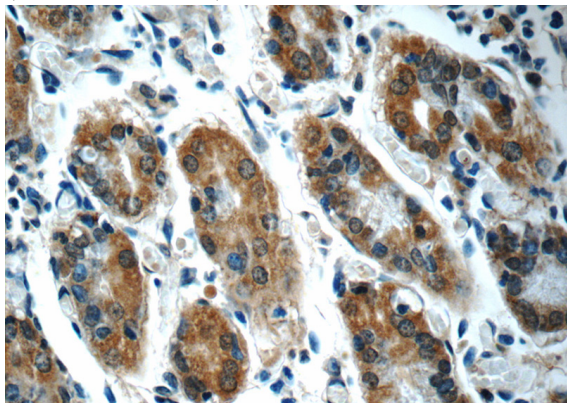
Immunohistochemistry of paraffin-embedded human heart tissue slide using Catalog No:115112(SEPN1 Antibody) at dilution of 1:50 (under 40x lens)

# SEPN1 antibody

Catalog Number: 115112

---

Immunohistochemistry of paraffin-embedded human stomach tissue slide using Catalog No:115112(SEPN1 Antibody) at dilution of 1:50 (under 10x lens)



Immunohistochemistry of paraffin-embedded human stomach tissue slide using Catalog No:115112(SEPN1 Antibody) at dilution of 1:50 (under 40x lens)