

# Human Endothelial Cell Adhesion Molecule (His Tag) recombinant protein



Catalog Number: 504112

## General Information

### Protein Construction

A DNA sequence encoding the extracellular domain (Met 1-Ala 248) of human ESAM (NP\_620411.2) precursor was expressed, with a polyhistidine tag at the C-terminus.

### Organism

Human

### Expression Host

Human Cells

## QC Testing

### Purity

> 97 % as determined by SDS-PAGE

### Endotoxin

< 1.0 EU per  $\mu\text{g}$  of the protein as determined by the LAL method

### Stability

Samples are stable for up to twelve months from date of receipt at  $-70^{\circ}\text{C}$

### Predicted N terminal

Gln 30

### Molecular Mass

The recombinant human ESAM consists of 230 amino acids and predicts a molecular mass of 25.4 kDa. By SDS-PAGE under reducing conditions, the

apparent molecular mass of rh ESAM is approximately 35-40 kDa due to glycosylation.

### Formulation

Lyophilized from sterile PBS, pH 7.4

1. 5 % trehalose and mannitol are added as protectants before lyophilization.

2. Please contact us for any concerns or special requirements.

## Usage Guide

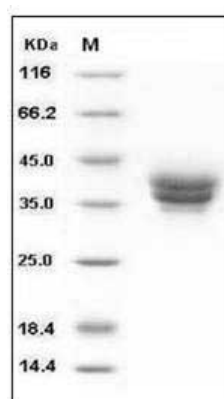
### Storage

Store it under sterile conditions at  $-20^{\circ}\text{C}$  to  $-80^{\circ}\text{C}$ . It is recommended that the protein be aliquoted for optimal storage. Avoid repeated freeze-thaw cycles.

### Reconstitution

Adding sterile water, prepare a stock solution of 0.25 mg/ml. Concentration is measured by UV-Vis.

### SDS-PAGE



Human ESAM / Endothelial Cell Adhesion Molecule Protein (His Tag) SDS-PAGE