

# KPNA1 antibody

Catalog Number: 112112

## Product name

KPNA1 antibody

## Specificity

Human, Mouse, Rat; other species not tested.

## Antibody description

KPNA1 Rabbit Polyclonal antibody. Positive IF detected in HepG2 cells, MCF-7 cells. Positive IHC detected in human testis tissue, human kidney tissue, human ovary tissue, human placenta tissue. Positive IP detected in HEK-293 cells. Positive WB detected in K-562 cells, HepG2 cells, Jurkat cells. Observed molecular weight by Western-blot: 60 kDa

## Preparation

This antibody was obtained by immunization of KPNA1 recombinant protein (Accession Number: NM\_002264). Purification method: Antigen affinity purified.

## Formulation

PBS with 0.02% sodium azide and 50% glycerol pH 7.3.

## Storage

Store at -20°C. DO NOT ALIQUOT

## Clonality

Polyclonal

## Ig Type

Rabbit IgG

## Applications

ELISA, WB, IHC, IF, IP

## Dilutions

Recommended Dilution:

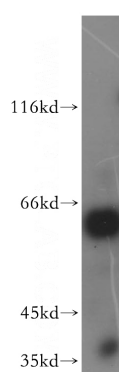
WB: 1:500-1:5000

IP: 1:500-1:5000

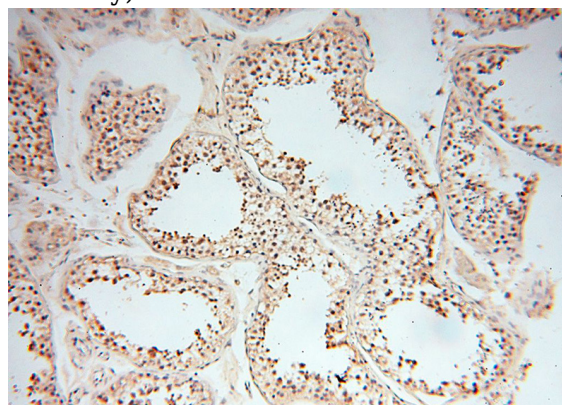
IHC: 1:20-1:200

IF: 1:10-1:100

## Validations



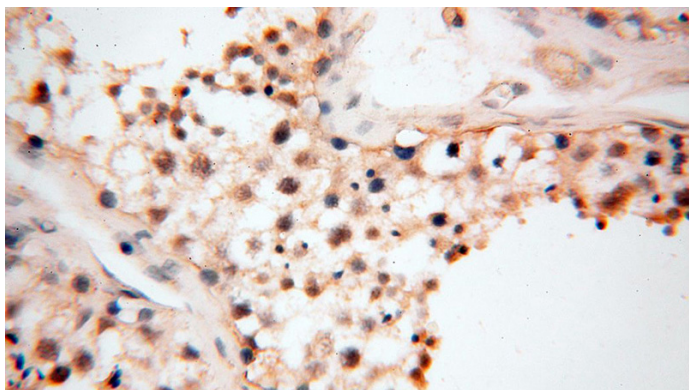
K-562 cells were subjected to SDS PAGE followed by western blot with Catalog No:112112(KPNA1 antibody) at dilution of 1:500



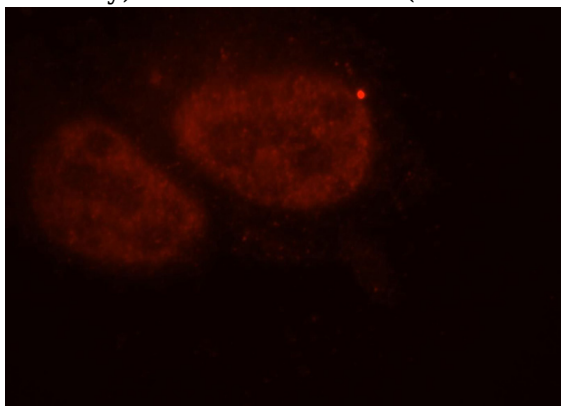
Immunohistochemical of paraffin-embedded human testis using Catalog No:112112(KPNA1 antibody) at dilution of 1:100 (under 10x lens)

# KPNA1 antibody

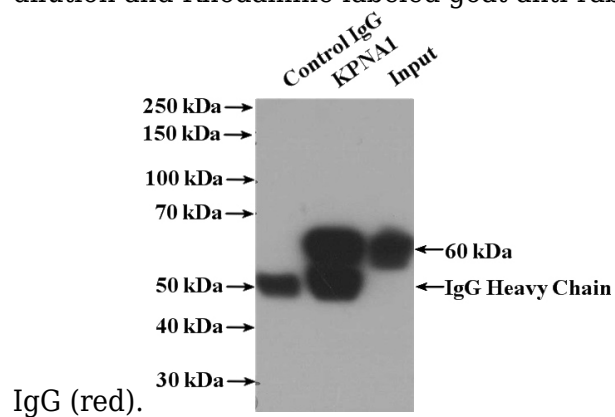
Catalog Number: 112112



Immunohistochemical of paraffin-embedded human testis using Catalog No:112112(KPNA1 antibody) at dilution of 1:100 (under 40x lens)



Immunofluorescent analysis of HepG2 cells, using KPNA1 antibody Catalog No:112112 at 1:25 dilution and Rhodamine-labeled goat anti-rabbit



IP Result of anti-KPNA1 (IP:Catalog No:112112, 4ug; Detection:Catalog No:112112 1:1000) with HEK-293 cells lysate 1480ug.