

# Anti-CD20/MS4A1 antibody



Catalog Number: 100112

## Product name

Anti-CD20/MS4A1 antibody

## Specificity

Human CD20 / MS4A1

## Antibody description

Rabbit monoclonal to CD20/MS4A1

## Preparation

This antibody was obtained from a rabbit immunized with purified, Human CD20 Transfected CHO Cells and conjugated with APC under optimum conditions, the unreacted APC was removed.

## Formulation

Aqueous solution containing 0.5% BSA and 0.09% sodium azide

## Storage

This antibody is stable for 12 months from date of receipt when stored at 2°C-8°C. Protected from prolonged exposure to light. Do not freeze ! Sodium azide is toxic to cells and should be disposed of properly. Flush with large volumes of water during disposal.

## Clonality

Monoclonal

## Ig Type

Rabbit IgG

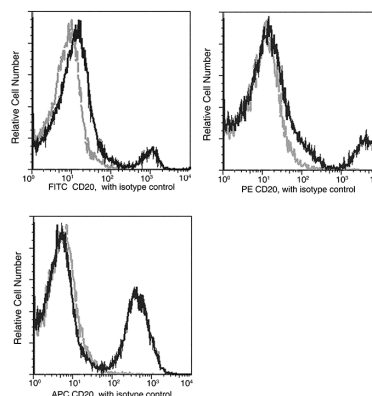
## Applications

FCM

## Dilutions

FCM

## Validations



CD20 / MS4A1 Antibody (APC), Rabbit MAb, Flow cytometry

Profile of anti-CD20 reactivity on peripheral blood lymphocytes analyzed by flow cytometry.