

# ABHD14B antibody



Catalog Number: 107812

## Product name

ABHD14B antibody

IHC: 1:20-1:200

IF: 1:10-1:100

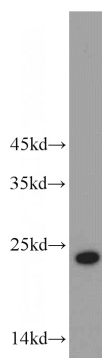
## Specificity

human, mouse, rat; other species not tested.

## Validations

## Antibody description

ABHD14B Rabbit Polyclonal antibody. Positive IF detected in HepG2. Positive IHC detected in human prostate hyperplasia. Positive WB detected in L02 cells, mouse small intestine tissue. Observed molecular weight by Western-blot: 22-25kd



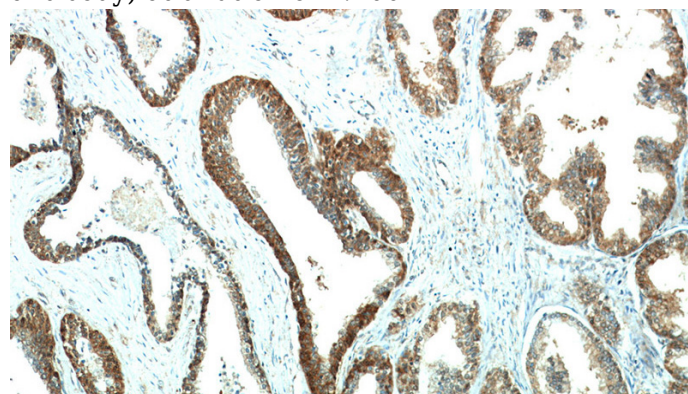
## Preparation

This antibody was obtained by immunization of ABHD14B recombinant protein (Accession Number: NM\_032750). Purification method: Antigen affinity purified.

L02 cells were subjected to SDS PAGE followed by western blot with Catalog No:107812(ABHD14B antibody) at dilution of 1:400

## Formulation

PBS with 0.02% sodium azide and 50% glycerol pH 7.3.



## Storage

Store at -20°C. DO NOT ALIQUOT

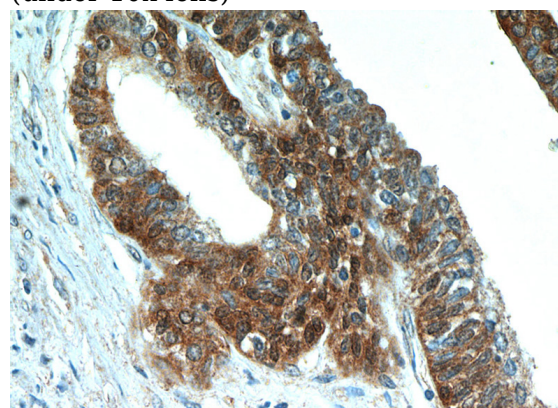
## Clonality

Polyclonal

Immunohistochemical of paraffin-embedded human prostate hyperplasia using Catalog No:107812(ABHD14B antibody) at dilution of 1:50 (under 10x lens)

## Ig Type

Rabbit IgG



## Applications

ELISA, WB, IHC, IF

## Dilutions

Recommended Dilution:

WB: 1:500-1:5000

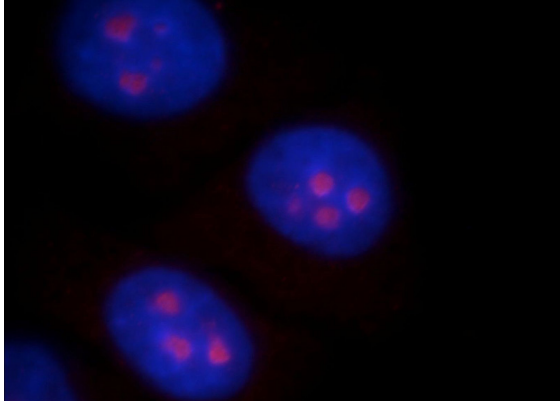
Immunohistochemical of paraffin-embedded

# ABHD14B antibody

Catalog Number: 107812

---

human prostate hyperplasia using Catalog No:107812(ABHD14B antibody) at dilution of 1:50 (under 40x lens)



Immunofluorescent analysis of HepG2 cells, using ABHD14B antibody Catalog No:107812 at 1:25 dilution and Rhodamine-labeled goat anti-rabbit IgG (red). Blue pseudocolor = DAPI (fluorescent DNA dye).