

RPL12 antibody

Catalog Number: 114812

Product name

RPL12 antibody

Specificity

human, mouse, rat; other species not tested.

Antibody description

RPL12 Rabbit Polyclonal antibody. Positive WB detected in HeLa cells, A549 cells, Jurkat cells. Observed molecular weight by Western-blot: 21kd

Preparation

This antibody was obtained by immunization of RPL12 recombinant protein (Accession Number: NM_000976). Purification method: Antigen affinity purified.

Formulation

PBS with 0.02% sodium azide and 50% glycerol pH 7.3.

Storage

Store at -20°C. DO NOT ALIQUOT

Clonality

Polyclonal

Ig Type

Rabbit IgG

Applications

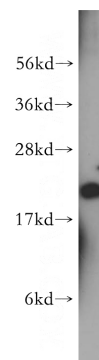
ELISA, WB

Dilutions

Recommended Dilution:

WB: 1:500-1:5000

Validations



HeLa cells were subjected to SDS PAGE followed by western blot with Catalog No:114812(RPL12 antibody) at dilution of 1:400