

# MRPL13 antibody



Catalog Number: 112812

## Product name

MRPL13 antibody

WB: 1:500-1:5000

IP: 1:200-1:2000

## Specificity

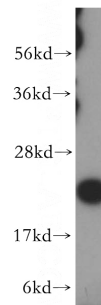
Human, Mouse, Rat, Monkey; other species not tested.

IHC: 1:20-1:200

## Antibody description

MRPL13 Rabbit Polyclonal antibody. Positive IHC detected in human colon cancer tissue. Positive IP detected in mouse lung tissue. Positive WB detected in HeLa cells, COS-7 cells, HL-60 cells, Jurkat cells, mouse lung tissue, rat lung tissue. Observed molecular weight by Western-blot: 23kd

## Validations



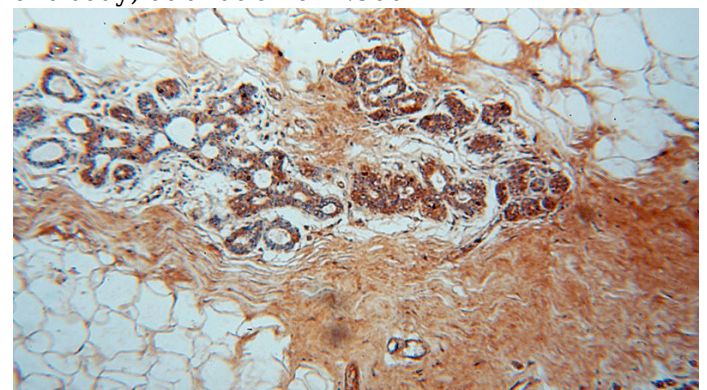
## Preparation

This antibody was obtained by immunization of MRPL13 recombinant protein (Accession Number: NM\_014078). Purification method: Antigen affinity purified.

HeLa cells were subjected to SDS PAGE followed by western blot with Catalog No:112812(MRPL13 antibody) at dilution of 1:500

## Formulation

PBS with 0.02% sodium azide and 50% glycerol pH 7.3.



## Storage

Store at -20°C. DO NOT ALIQUOT

## Clonality

Polyclonal

Immunohistochemical of paraffin-embedded human colon cancer using Catalog No:112812(MRPL13 antibody) at dilution of 1:50 (under 10x lens)

## Ig Type

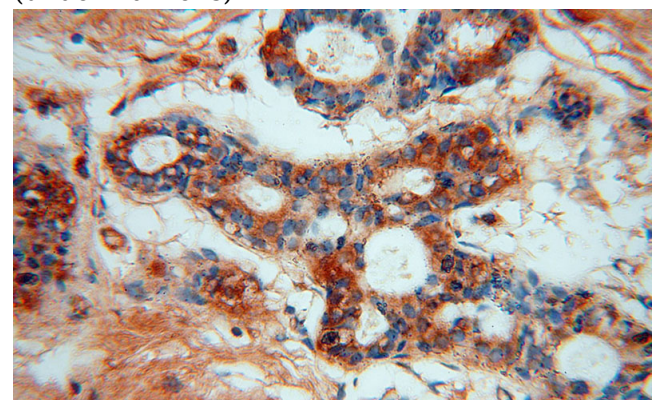
Rabbit IgG

## Applications

ELISA, WB, IHC, IP

## Dilutions

Recommended Dilution:

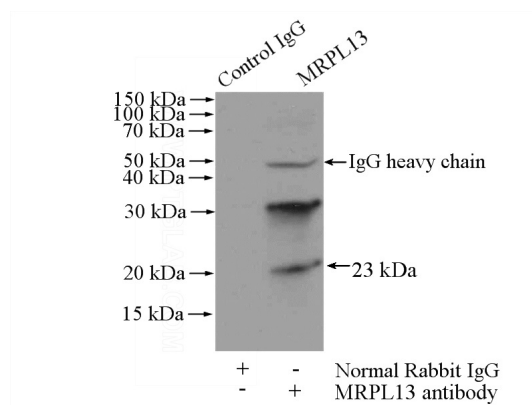


# MRPL13 antibody

Catalog Number: 112812

---

Immunohistochemical of paraffin-embedded human colon cancer using Catalog No:112812(MRPL13 antibody) at dilution of 1:50 (under 40x lens)



IP Result of anti-MRPL13 (IP:Catalog No:112812, 4ug; Detection:Catalog No:112812 1:500) with mouse lung tissue lysate 4000ug.