

Anti-Arylsulfatase A / ARSA antibody



Catalog Number: 102812

Product name

Anti-Arylsulfatase A / ARSA antibody

Immunogen

[Mouse Arylsulfatase A / ARSA \(His Tag\) recombinant protein](#)

Specificity

Mouse Arylsulfatase-A / ARSA

Antibody description

Rabbit polyclonal to Arylsulfatase A / ARSA

Preparation

Produced in rabbits immunized with purified, recombinant Mouse ARSA (rM ARSA; NP_033843.2; Met 1-Ser 506). ARSA specific IgG was purified by Mouse ARSA affinity chromatography.

Formulation

0.2 µm filtered solution in PBS with 5% trehalose

Storage

This antibody can be stored at 2°C-8°C for one month without detectable loss of activity. Antibody products are stable for twelve months from date of receipt when stored at -20°C to -80°C.

Preservative-Free.

Sodium azide is recommended to avoid contamination (final concentration 0.05%-0.1%). It is toxic to cells and should be disposed of properly. Avoid repeated freeze-thaw cycles.

Clonality

Polyclonal

Ig Type

Rabbit IgG

Applications

ELISA, WB, IP

Dilutions

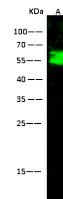
WB: 1-10 µg/mL

ELISA: 0.1-0.2 µg/mL

This antibody can be used at 0.1-0.2 µg/mL with the appropriate secondary reagents to detect Mouse ARSA. The detection limit for Mouse ARSA is approximately 0.00245 ng/well.

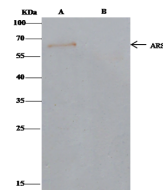
IP: 4-6 µg/mg of lysate

Validations



Items	Lanes	A
Sample (whole cell lysate)		HepG2
Sample Volume (µg/lane)		30
Gel		13% SDS-PAGE reducing gel
Recommended Concentration		1-10 µg/ml
Secondary Antibody		Dylight 800-labeled Antibody to Rabbit IgG (H+L) at 1:5000 dilution
Developed using		Odyssey imaging system
Explanation		Predicted band size - 54 kDa Observed band size - 54 kDa

Arylsulfatase A / ARSA Antibody, Rabbit PAb, Antigen Affinity Purified, Western blot



Items	Lanes	A	B
Sample (whole cell lysate)		HepG2	
Sample quantity		0.5 mg	
IP antibody type		mARSA-RP02	Rabbit Blank IgG
IP antibody quantity		2 µg	
Protein G agarose		15 µl of 50% Protein G Agarose	
Gel		13% SDS-PAGE reducing gel	
Primary antibody		mARSA antibody at 10 µg/ml	
Secondary antibody		Clon-Block IP Detection Reagent (HRP) at 1:1000 dilution	

Arylsulfatase A / ARSA Antibody, Rabbit PAb, Antigen Affinity Purified