

Anti-IL2RG antibody



Catalog Number: 141812

Product name

Anti-IL2RG antibody

Specificity

Human CD132 / IL2RG

Antibody description

Rabbit Polyclonal to Human IL2RG

Preparation

Produced in rabbits immunized with a synthetic peptide corresponding to the center region of the Human CD132 / IL2RG, and purified by antigen affinity chromatography.

Formulation

0.2 µm filtered solution in PBS

Storage

This antibody can be stored at 2°C-8°C for one month without detectable loss of activity. Antibody products are stable for twelve months from date of receipt when stored at -20°C to -80°C.

Preservative-Free.

Sodium azide is recommended to avoid contamination (final concentration 0.05%-0.1%). It is toxic to cells and should be disposed of properly. Avoid repeated freeze-thaw cycles.

Clonality

Polyclonal

Ig Type

Rabbit IgG

Applications

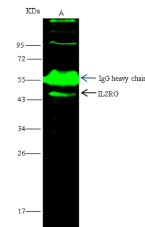
WB, IP

Dilutions

WB: 5-20 µg/ml

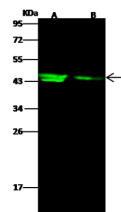
IP: 1-4 µl/mg of lysate

Validations



Items	Lanes	A
Sample (whole cell lysate)		Raji
Sample quantity		0.5 mg
IP antibody quantity		4 µL
Protein G agarose		15 µl of 50% Protein G agarose
Gel		13% SDS-PAGE reducing gel
Primary antibody		KLH-SMCC-sinoA1868+KLH-SMCC-sinoA2059 antibody at 10 µg/ml
Secondary antibody		Dylight 800-labeled antibody to rabbit IgG (H+L), at 1:5000 dilution

Human CD132 / IL2RG Immunoprecipitation(IP)



Items	Lanes	A	B
Sample (whole cell lysate)		HELA	RAJI
Sample Volume (µg/lane)		30	30
Gel		13% SDS-PAGE reducing gel	
Recommended Concentration		5-20 µg/ml	
Secondary Antibody		Dylight 800-labeled Antibody to Rabbit IgG (H+L), at 1:5000 dilution.	
Developed using Odyssey imaging system.			
Explanation		Predicted band size : 42 kDa	Observed band size : 44 kDa

15449

Human CD132 / IL2RG Western blot (WB) 15448