

# Anti-B2M/beta-2 microglobulin antibody



Catalog Number: 100812

## Product name

Anti-B2M/beta-2 microglobulin antibody

## Immunogen

[Mouse B2M/beta-2 microglobulin \(His Tag\) recombinant protein](#)

## Specificity

Mouse B2M / Beta-2-microglobulin

## Antibody description

Rabbit polyclonal to B2M/beta-2 microglobulin

## Preparation

Produced in rabbits immunized with purified, recombinant Mouse B2M / Beta-2-microglobulin (rM B2M / Beta-2-microglobulin; P01887; Met1-Met119). B2M / Beta-2-microglobulin specific IgG was purified by Mouse B2M / Beta-2-microglobulin affinity chromatography.

## Formulation

0.2 µm filtered solution in PBS with 5% trehalose

## Storage

This antibody can be stored at 2°C-8°C for one month without detectable loss of activity. Antibody products are stable for twelve months from date of receipt when stored at -20°C to -80°C.

Preservative-Free.

Sodium azide is recommended to avoid contamination (final concentration 0.05%-0.1%). It is toxic to cells and should be disposed of properly. Avoid repeated freeze-thaw cycles.

## Clonality

Polyclonal

## Ig Type

Rabbit IgG

## Applications

ELISA, IHC-P

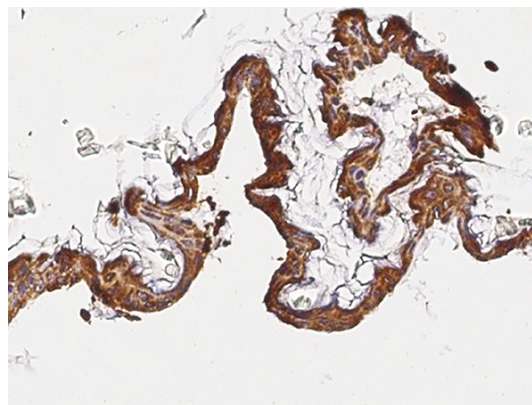
## Dilutions

ELISA: 0.1-0.2 µg/mL

This antibody can be used at 0.1-0.2 µg/mL with the appropriate secondary reagents to detect Mouse B2M / Beta-2-microglobulin. The detection limit for Mouse B2M / Beta-2-microglobulin is approximately 0.00975 ng/well.

IHC-P: 0.1-2 µg/mL

## Validations



B2M / Beta-2-microglobulin Antibody, Rabbit PAb, Antigen Affinity Purified, Immunohistochemistry

Immunochemical staining of mouse B2M in mouse skin with rabbit polyclonal antibody (1 µg/mL, formalin-fixed paraffin embedded sections).