

# CMBL antibody



Catalog Number: 109412

## Product name

CMBL antibody

## Specificity

human, mouse, rat; other species not tested.

## Antibody description

CMBL Rabbit Polyclonal antibody. Positive WB detected in HeLa cells, mouse kidney tissue, mouse liver tissue, mouse skeletal muscle tissue. Observed molecular weight by Western-blot: 28kd

## Preparation

This antibody was obtained by immunization of CMBL recombinant protein (Accession Number: XM\_017009034). Purification method: Antigen affinity purified.

## Formulation

PBS with 0.02% sodium azide and 50% glycerol pH 7.3.

## Storage

Store at -20°C. DO NOT ALIQUOT

## Clonality

Polyclonal

## Ig Type

Rabbit IgG

## Applications

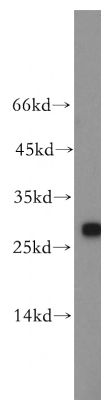
ELISA, WB

## Dilutions

Recommended Dilution:

WB: 1:500-1:5000

## Validations



HeLa cells were subjected to SDS PAGE followed by western blot with Catalog No:109412(CMBL antibody) at dilution of 1:200