

Anti-FGF20 antibody



Catalog Number: 176412

Product name

Anti-FGF20 antibody

Specificity

Human, Mouse, Rat

Antibody description

Rabbit polyclonal antibody to FGF20

Preparation

This antigen of this antibody was the antiserum was produced against synthesized peptide derived from the internal region of human fgf20. aa range:151-200

Formulation

Liquid, Liquid in PBS containing 50% glycerol, 0.5% BSA and 0.02% sodium azide.

Storage

Store at +4°C after thawing. Aliquot store at -20°C or -80°C. Avoid repeated freeze / thaw cycles.

Clonality

Polyclonal

Ig Type

Rabbit IgG

Applications

WB, IHC-P

Dilutions

WB: 1:500-1:2000

IHC-P: 1:100-300

Validations

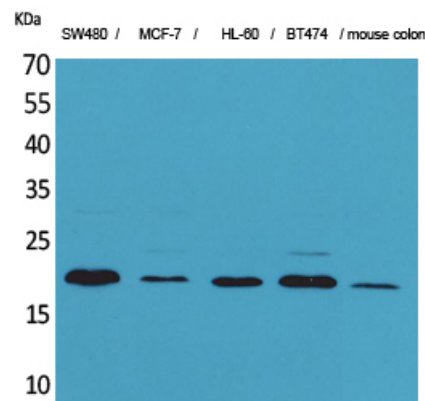


Fig1:: Western Blot analysis of SW480, MCF-7, HL-60, BT474, mouse colon cells using FGF-20 Polyclonal Antibody.. Secondary antibody [catalog#: HA1001) was diluted at 1:20000

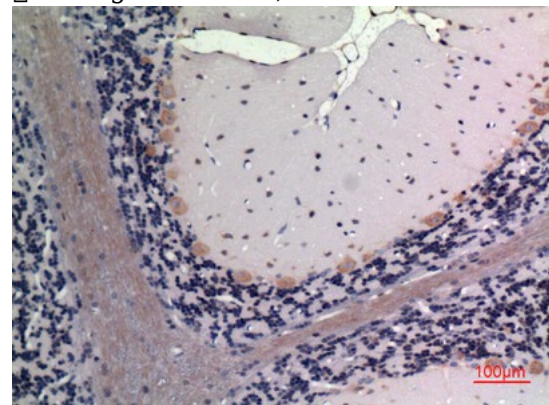


Fig2:: Immunohistochemical analysis of paraffin-embedded rat-brain, antibody was diluted at 1:100