

General Information

Protein Construction

A DNA sequence encoding the rhesus CD1A(NP_001139290.1) (Met1-Ser299) of was expressed with a polyhistidine tag at the C-terminus, constructed the plasmid 1; A DNA sequence encoding the rhesus B2M (NP_001040602.1) (Met1-Met119) constructed the plasmid 2. The two plasmids were co-expressed and the rhesus CD1C/B2M heterodimer was purified.

Organism

Rhesus

Expression Host

Human Cells

QC Testing

Purity

> (88.9+9.2) % as determined by SDS-PAGE.

Endotoxin

< 1.0 EU per μg protein as determined by the LAL method.

Stability

Samples are stable for up to twelve months from date of receipt at -70°C

Predicted N terminal

Asp19 & Ile 21

Molecular Mass

The recombinant heterodimer of rhesus CD1A&B2M comprises 391 (292+99) amino acids and has a calculated molecular mass of 45.2 (33.6+11.6) KDa.

Formulation

Lyophilized from sterile PBS, pH 7.4.

1. 5 % trehalose and mannitol are added as protectants before lyophilization.
2. Please contact us for any concerns or special requirements.

Usage Guide

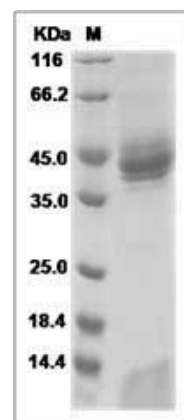
Storage

Store it under sterile conditions at -20°C to -80°C . It is recommended that the protein be aliquoted for optimal storage. Avoid repeated freeze-thaw cycles.

Reconstitution

Adding sterile water, prepare a stock solution of 0.25 mg/ml. Concentration is measured by UV-Vis.

SDS-PAGE



Rhesus CD1A & B2M Heterodimer Protein