

# LYRM7 antibody



Catalog Number: 112412

## Product name

LYRM7 antibody

## Specificity

Human; other species not tested.

## Antibody description

LYRM7 Rabbit Polyclonal antibody. Positive IHC detected in human liver tissue, human hepat°Cirrrosis tissue, human kidney tissue. Positive IF detected in HepG2 cells. Positive FC detected in HepG2 cells.

## Preparation

This antibody was obtained by immunization of LYRM7 recombinant protein (Accession Number: NM\_181705). Purification method: Antigen Affinity purified.

## Formulation

PBS with 0.02% sodium azide and 50% glycerol pH 7.3.

## Storage

Store at -20°C. DO NOT ALIQUOT

## Clonality

Polyclonal

## Ig Type

Rabbit IgG

## Applications

ELISA, IHC, IF, FC

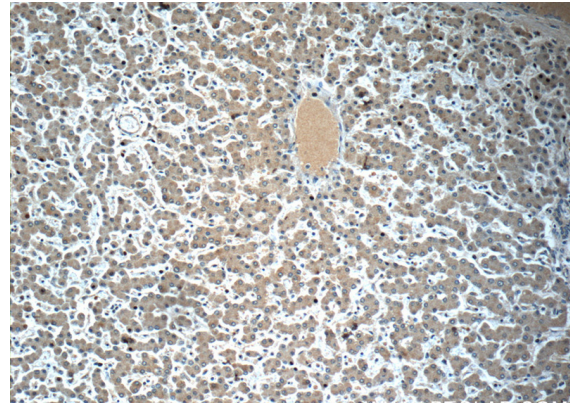
## Dilutions

Recommended Dilution:

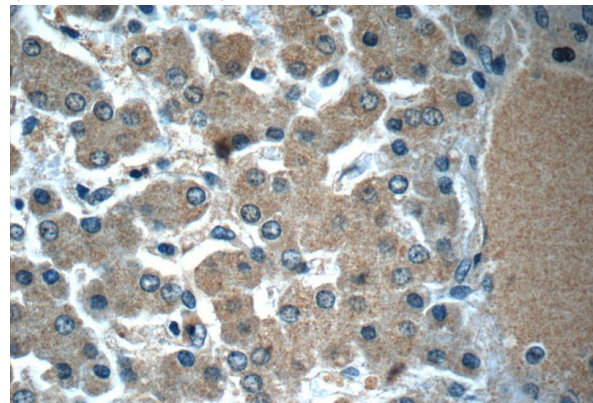
IHC: 1:20-1:200

IF: 1:10-1:100

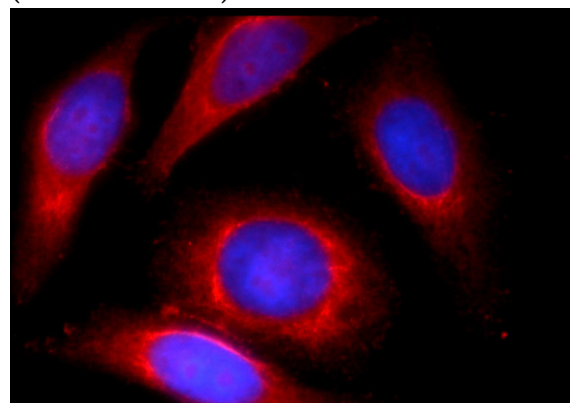
## Validations



Immunohistochemistry of paraffin-embedded human liver slide using Catalog No:112412(LYRM7 Antibody) at dilution of 1:50 (under 10x lens)



Immunohistochemistry of paraffin-embedded human liver slide using Catalog No:112412(LYRM7 Antibody) at dilution of 1:50 (under 40x lens)



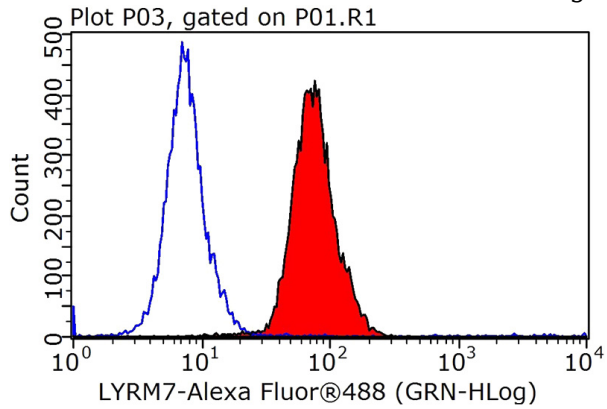
Immunofluorescent analysis of HepG2 cells using

# LYRM7 antibody



Catalog Number: 112412

Catalog No:112412(LYRM7 Antibody) at dilution of 1:25 and Rhodamine-Goat anti-Rabbit IgG



1X10<sup>6</sup> HepG2 cells were stained with .2ug LYRM7 antibody (Catalog No:112412, red) and control antibody (blue). Fixed with 90% MeOH blocked with 3% BSA (30 min). Alexa Fluor 488-conjugated AffiniPure Goat Anti-Rabbit IgG(H+L) with dilution 1:1000.