

# Anti-Cspg4 antibody



Catalog Number: 142412

## Product name

Anti-Cspg4 antibody

## Specificity

Human Cspg4

## Antibody description

Rabbit Polyclonal to Human Cspg4

## Preparation

Produced in rabbits immunized with a synthetic peptide corresponding to the C-terminus of the Human Cspg4, and purified by antigen affinity chromatography.

## Formulation

0.2 µm filtered solution in PBS

## Storage

This antibody can be stored at 2°C-8°C for one month without detectable loss of activity. Antibody products are stable for twelve months from date of receipt when stored at -20°C to -80°C.

Preservative-Free.

Sodium azide is recommended to avoid contamination (final concentration 0.05%-0.1%). It

is toxic to cells and should be disposed of properly. Avoid repeated freeze-thaw cycles.

## Clonality

Polyclonal

## Ig Type

Rabbit IgG

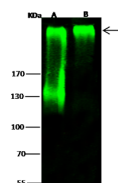
## Applications

WB

## Dilutions

WB: 1-5 µg/ml

## Validations



Lanes	A	B
Items		
Sample	Rat brain tissue lysate	Mouse brain tissue lysate
Sample Volume (µg/lane)	30	30
Gel	7.5% SDS-PAGE reducing gel	
Recommended Concentration	1.5 µg/ml	
Secondary Antibody	Dylight 800 labeled Antibody to Rabbit IgG (H+), at 1:5000 dilution.	
Developed using Odyssey imaging system.		
Explanation	Predicted band size : 251 kDa Observed band size : 251 kDa Additional bands at : 130 kDa (We are unsure as to the identity of these extra bands.)	

Human Cspg4 Western blot (WB) 14589