

# KIF2C antibody

Catalog Number: 112012

## Product name

KIF2C antibody

IP: 1:200-1:2000

IF: 1:20-1:200

## Specificity

Human, Mouse, Rat; other species not tested.

## Antibody description

KIF2C Rabbit Polyclonal antibody. Positive WB detected in Transfected HEK-293 cells. Positive IP detected in mouse testis tissue. Positive IF detected in HeLa cells. Observed molecular weight by Western-blot: 81 kDa

## Preparation

This antibody was obtained by immunization of KIF2C recombinant protein (Accession Number: NM\_006845). Purification method: Antigen affinity purified.

## Formulation

PBS with 0.1% sodium azide and 50% glycerol pH 7.3.

## Storage

Store at -20°C. DO NOT ALIQUOT

## Clonality

Polyclonal

## Ig Type

Rabbit IgG

## Applications

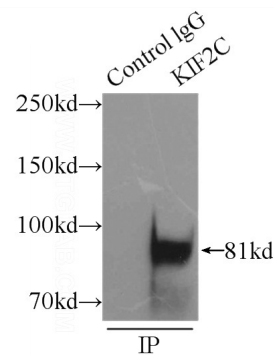
ELISA, IP, WB, IF

## Dilutions

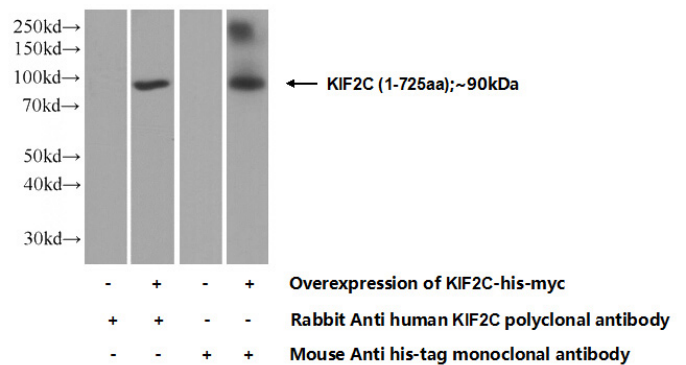
Recommended Dilution:

WB: 1:500-1:5000

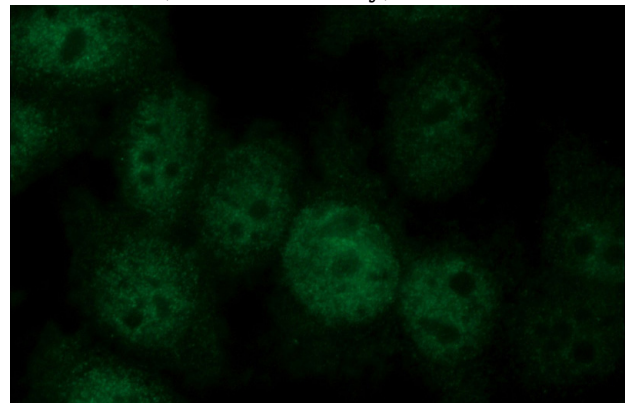
## Validations



IP Result of anti-KIF2C (IP:Catalog No:112012, 3ug; Detection:Catalog No:112012 1:500) with mouse testis tissue lysate 8000ug.



Transfected HEK-293 cells were subjected to SDS PAGE followed by western blot with Catalog No:112012(KIF2C Antibody) at dilution of 1:1000



Immunofluorescent analysis of HeLa cells using Catalog No:112012(KIF2C Antibody) at dilution of

# KIF2C antibody



Catalog Number: 112012

---

1:50 and Alexa Fluor 488-conjugated AffiniPure

Goat Anti-Rabbit IgG(H+L)