

# CYP46A1 antibody

Catalog Number: 109702

## Product name

CYP46A1 antibody

IP: 1:200-1:2000

IHC: 1:20-1:200

## Specificity

Human, Mouse, Rat; other species not tested.

## Antibody description

CYP46A1 Rabbit Polyclonal antibody. Positive WB detected in human brain tissue, mouse brain tissue. Positive IP detected in mouse brain tissue. Positive IHC detected in human gliomas tissue, mouse brain tissue. Observed molecular weight by Western-blot: 57 kDa

## Preparation

This antibody was obtained by immunization of CYP46A1 recombinant protein (Accession Number: NM\_006668). Purification method: Antigen affinity purified.

## Formulation

PBS with 0.1% sodium azide and 50% glycerol pH 7.3.

## Storage

Store at -20°C. DO NOT ALIQUOT

## Clonality

Polyclonal

## Ig Type

Rabbit IgG

## Applications

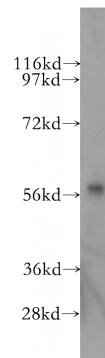
ELISA, WB, IHC, IP

## Dilutions

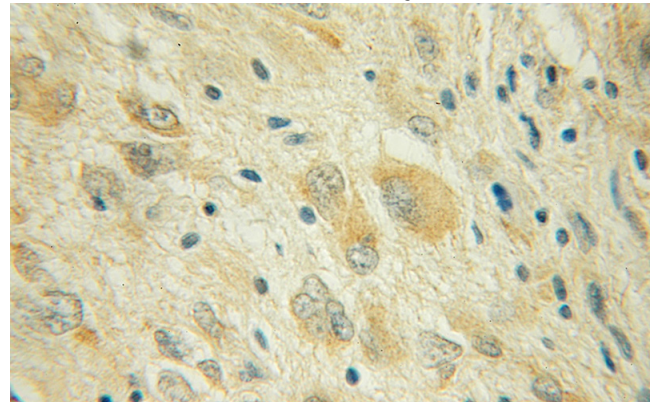
Recommended Dilution:

WB: 1:200-1:2000

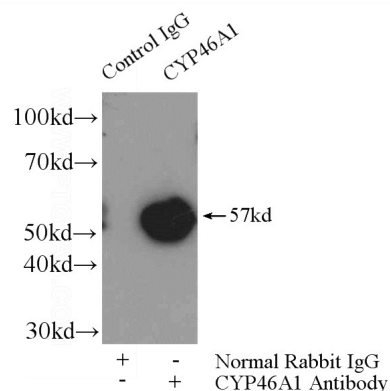
## Validations



human brain tissue were subjected to SDS PAGE followed by western blot with Catalog No:109702(CYP46A1 antibody) at dilution of 1:500



Immunohistochemical of paraffin-embedded human gliomas using Catalog No:109702(CYP46A1 antibody) at dilution of 1:50 (under 10x lens)



IP Result of anti-CYP46A1 (IP:Catalog No:109702,

# CYP46A1 antibody



Catalog Number: 109702

---

4ug; Detection:Catalog No:109702 1:500) with mouse brain tissue lysate 3200ug.