

# Anti-MBL-2 / MBL antibody



Catalog Number: 100702

## Product name

Anti-MBL-2 / MBL antibody

## Specificity

human MBL2

## Antibody description

Rabbit polyclonal to MBL-2 / MBL

## Preparation

Produced in rabbits immunized with A synthetic peptide corresponding to the C-terminus of the human MBL2, and purified by antigen affinity chromatography.

## Formulation

0.2 µm filtered solution in PBS

## Storage

This antibody can be stored at 2°C-8°C for one month without detectable loss of activity. Antibody products are stable for twelve months from date of receipt when stored at -20°C to -80°C.

Preservative-Free.

Sodium azide is recommended to avoid contamination (final concentration 0.05%-0.1%). It is toxic to cells and should be disposed of properly. Avoid repeated freeze-thaw cycles.

## Clonality

Polyclonal

## Ig Type

Rabbit IgG

## Applications

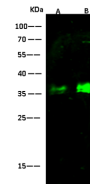
WB, IP

## Dilutions

WB: 10-20 µg/ml

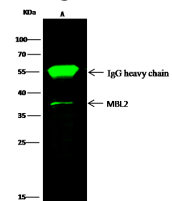
IP: 1-4 µg/mg of lysate

## Validations



Lanes	A	B
Sample (whole cell lysate)	HepG2	COLO205
Sample Volume (µg/lane)	30	30
Gel	13% SDS-PAGE reducing gel	
Recommended Concentration	10-20 µg/ml	
Secondary Antibody	Dylight 800-labeled Antibody to Rabbit IgG (H+L), at 1:5000 dilution.	
Explanation	Developed using Odyssey imaging system. Predicted band size : 36 kDa Observed band size : 37 kDa Additional bands at : 68 kDa (We are unsure as to the identity of these extra bands. They are possible non-specific bindings).	

## MBL2 Antibody, Rabbit PAb, Antigen Affinity



Lanes	A
Sample (whole cell lysate)	HepG2
Sample quantity	0.5 µg
IP antibody quantity	2 µg
Protein G agarose	15 µl of 50% Protein G Agarose
Gel	13% SDS-PAGE reducing gel
Primary antibody	K11-SMCC-slowM438 antibody at 10 µg/ml
Secondary antibody	Dylight 800-labeled antibody to rabbit IgG (H+L), at 1:5000 dilution

Purified, Western blot

## MBL2 Antibody, Rabbit PAb, Antigen Affinity

Purified, Immunoprecipitation