

# ATP6AP1 antibody



Catalog Number: 108302

## Product name

ATP6AP1 antibody

## Specificity

Human, Mouse, Rat; other species not tested.

## Antibody description

ATP6AP1 Rabbit Polyclonal antibody. Positive WB detected in mouse kidney tissue, HeLa cells, HepG2 cells. Positive IHC detected in human kidney tissue. Observed molecular weight by Western-blot: 46-52kd, 61-64kd

## Preparation

This antibody was obtained by immunization of ATP6AP1 recombinant protein (Accession Number: NM\_001183). Purification method: Antigen affinity purified.

## Formulation

PBS with 0.1% sodium azide and 50% glycerol pH 7.3.

## Storage

Store at -20°C. DO NOT ALIQUOT

## Clonality

Polyclonal

## Ig Type

Rabbit IgG

## Applications

ELISA, WB, IHC

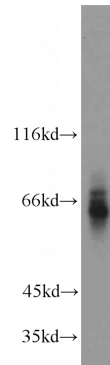
## Dilutions

Recommended Dilution:

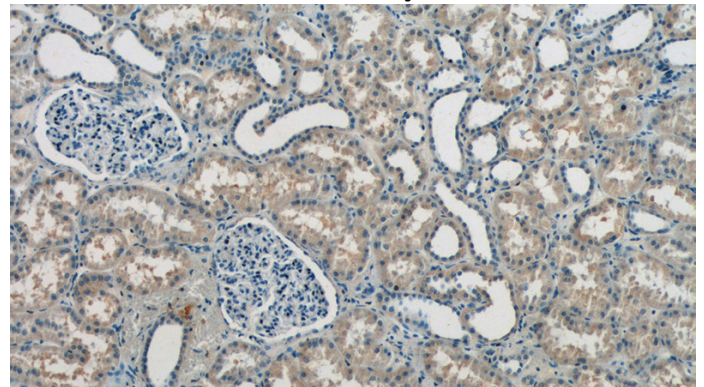
WB: 1:500-1:5000

IHC: 1:20-1:200

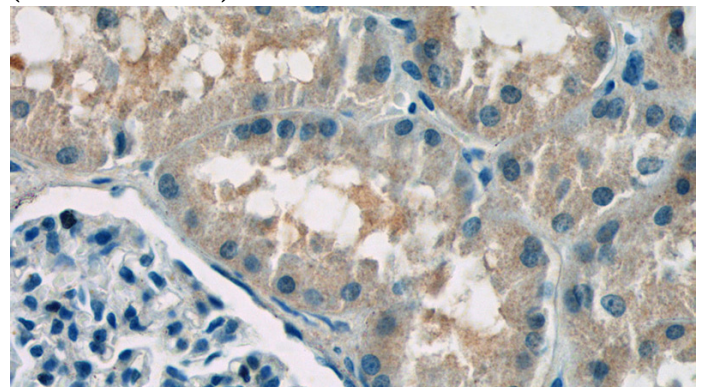
## Validations



mouse kidney tissue were subjected to SDS PAGE followed by western blot with Catalog No:108302(ATP6AP1 antibody) at dilution of 1:300



Immunohistochemistry of paraffin-embedded human kidney tissue slide using Catalog No:108302(ATP6AP1 Antibody) at dilution of 1:50 (under 10x lens)



Immunohistochemistry of paraffin-embedded human kidney tissue slide using Catalog No:108302(ATP6AP1 Antibody) at dilution of 1:50

# ATP6AP1 antibody



Catalog Number: 108302

---

(under 40x lens)