

# SLC13A3 antibody



Catalog Number: 115302

## Product name

SLC13A3 antibody

## Specificity

Human, Mouse; other species not tested.

## Antibody description

SLC13A3 Rabbit Polyclonal antibody. Positive WB detected in mouse kidney tissue, HEK-293 cells. Observed molecular weight by Western-blot: 55-60 kDa

## Preparation

This antibody was obtained by immunization of SLC13A3 recombinant protein (Accession Number: NM\_022829). Purification method: Antigen affinity purified.

## Formulation

PBS with 0.1% sodium azide and 50% glycerol pH 7.3.

## Storage

Store at -20°C. DO NOT ALIQUOT

## Clonality

Polyclonal

## Ig Type

Rabbit IgG

## Applications

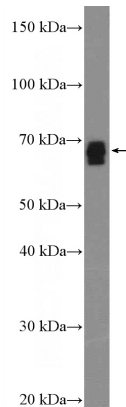
ELISA, WB

## Dilutions

Recommended Dilution:

WB: 1:500-1:5000

## Validations



mouse kidney tissue were subjected to SDS PAGE followed by western blot with Catalog No:115302(SLC13A3 Antibody) at dilution of 1:1000