

SETD5 Polyclonal Antibody



Catalog Number: 165302

Product name

SETD5 Polyclonal Antibody

Specificity

Human, Mouse, Rat

Antibody description

Polyclonal antibody to SETD5

Preparation

Antigen: Recombinant fusion protein containing a sequence corresponding to amino acids 520-740 of human SETD5 (NP_001073986.1).

Formulation

PBS with 0.02% sodium azide, 50% glycerol, pH7.3.

Storage

Store at -20°C. Avoid freeze / thaw cycles.

Clonality

Polyclonal

Ig Type

Rabbit IgG

Applications

WB, IHC, IF

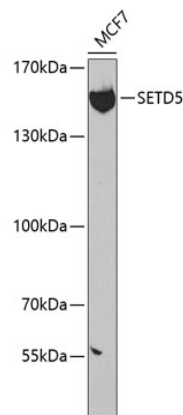
Dilutions

WB 1:500 - 1:2000

IHC 1:50 - 1:200

IF 1:50 - 1:100

Validations



Western blot - SETD5 Polyclonal Antibody

Western blot analysis of extracts of MCF-7 cells, using SETD5 antibody at 1:300 dilution. Secondary antibody: HRP Goat Anti-Rabbit IgG (H+L) at 1:10000 dilution. Lysates/proteins: 25ug per lane. Blocking buffer: 3% nonfat dry milk in TBST. Detection: ECL Basic Kit. Exposure time: 90s.