

# Anti-PDE2A antibody



Catalog Number: 176602

## Product name

Anti-PDE2A antibody

## Specificity

Human, Mouse

## Antibody description

Rabbit polyclonal antibody to PDE2A

## Preparation

This antigen of this antibody was recombinant protein within human pde2a aa 750-941.

## Formulation

Liquid, 1\*TBS (pH7.4), 0.2% BSA, 50% Glycerol.  
Preservative: 0.05% Sodium Azide.

## Storage

Store at +4°C after thawing. Aliquot store at -20°C. Avoid repeated freeze / thaw cycles.

## Clonality

Polyclonal

## Ig Type

Rabbit IgG

## Applications

WB

## Dilutions

WB: 1:500-1:1,000

## Validations

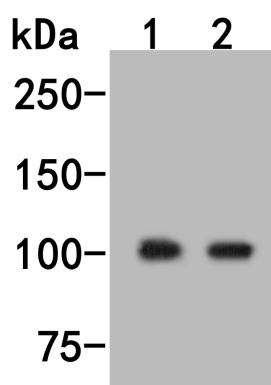


Fig1:; Western blot analysis of PDE2A on different lysates. Proteins were transferred to a PVDF membrane and blocked with 5% BSA in PBS for 1 hour at room temperature. The primary antibody (1/500) was used in 5% BSA at room temperature for 2 hours. Goat Anti-Rabbit IgG - HRP Secondary Antibody (HA1001) at 1:5,000 dilution was used for 1 hour at room temperature.; Positive control:; Lane 1: Human brain tissue lysate; Lane 2: Mouse lymphatic tissue lysate