

HLA-DRA Polyclonal Antibody



Catalog Number: 166602

Product name

HLA-DRA Polyclonal Antibody

Specificity

Human

Antibody description

Polyclonal antibody to HLA-DRA

Preparation

Antigen: Recombinant fusion protein containing a sequence corresponding to amino acids 26-216 of human HLA-DRA (NP_061984.2).

Formulation

PBS with 0.02% sodium azide, 50% glycerol, pH7.3.

Storage

Store at -20°C. Avoid freeze / thaw cycles.

Clonality

Polyclonal

Ig Type

Rabbit IgG

Applications

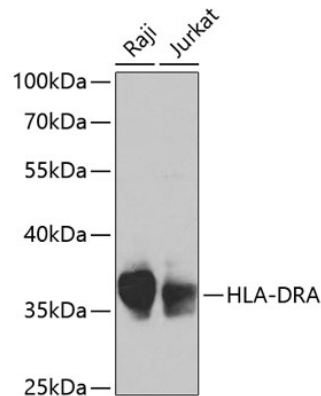
WB, IHC

Dilutions

WB 1:500 - 1:2000

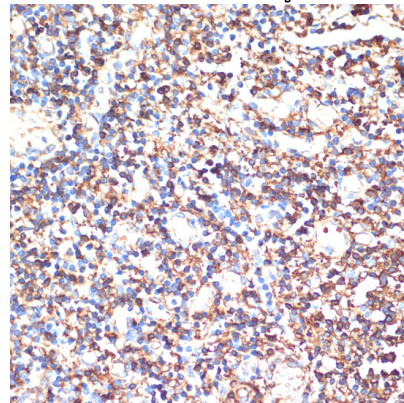
IHC 1:50 - 1:200

Validations



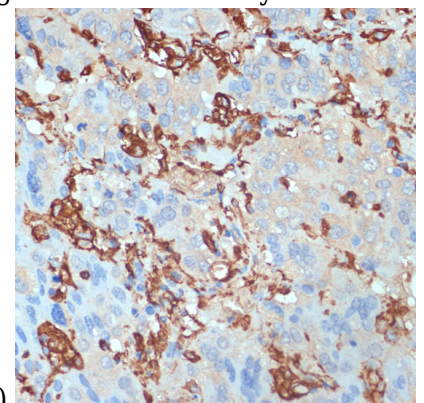
Western blot - HLA-DRA Polyclonal Antibody

Western blot analysis of extracts of various cell lines, using HLA-DRA antibody at 1:1000 dilution. Secondary antibody: HRP Goat Anti-Rabbit IgG (H+L) at 1:10000 dilution. Lysates/proteins: 25ug per lane. Blocking buffer: 3% nonfat dry milk in TBST.



Immunohistochemistry - HLA-DRA Polyclonal Antibody

Immunohistochemistry of paraffin-embedded human tonsil using HLA-DRA antibody at dilution



of 1:100 (40x lens).

HLA-DRA Polyclonal Antibody



Catalog Number: 166602

Immunohistochemistry - HLA-DRA Polyclonal Antibody

Immunohistochemistry of paraffin-embedded human liver cancer using HLA-DRA antibody at dilution of 1:100 (40x lens).