

# MGME1 antibody



Catalog Number: 112602

## Product name

MGME1 antibody

## Specificity

Human, Mouse; other species not tested.

## Antibody description

MGME1 Rabbit Polyclonal antibody. Positive IHC detected in human kidney tissue, human liver cancer tissue. Positive WB detected in Jurkat cells, A549 cells, HEK-293 cells, HepG2 cells, mouse liver tissue, Y79 cells. Observed molecular weight by Western-blot: 36-39 kDa

## Preparation

This antibody was obtained by immunization of MGME1 recombinant protein (Accession Number: XM\_017028127). Purification method: Antigen affinity purified.

## Formulation

PBS with 0.02% sodium azide and 50% glycerol pH 7.3.

## Storage

Store at -20°C. DO NOT ALIQUOT

## Clonality

Polyclonal

## Ig Type

Rabbit IgG

## Applications

ELISA, WB, IHC

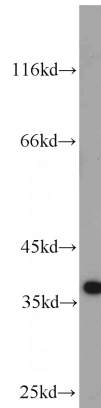
## Dilutions

Recommended Dilution:

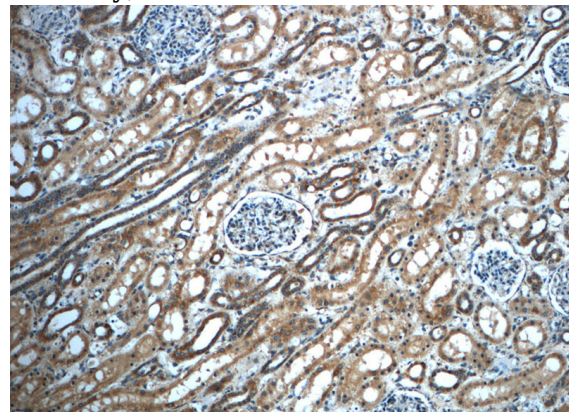
WB: 1:500-1:5000

IHC: 1:20-1:200

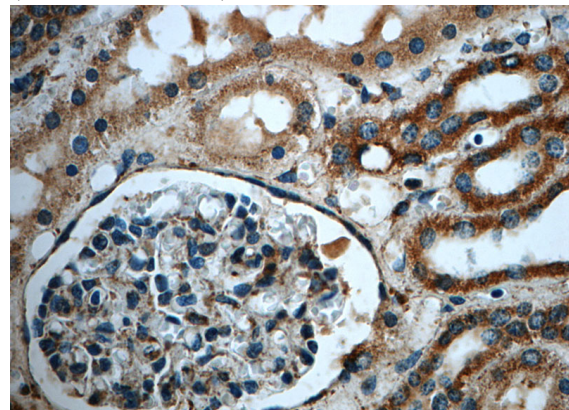
## Validations



Jurkat cells were subjected to SDS PAGE followed by western blot with Catalog No:112602(MGME1 antibody) at dilution of 1:1000



Immunohistochemistry of paraffin-embedded human kidney slide using Catalog No:112602(MGME1 Antibody) at dilution of 1:50 (under 10x lens)



Immunohistochemistry of paraffin-embedded human kidney slide using Catalog

# MGME1 antibody



Catalog Number: 112602

---

No:112602(MGME1 Antibody) at dilution of 1:50 (under 40x lens)