

# HADH Polyclonal Antibody



Catalog Number: 160602

## Product name

HADH Polyclonal Antibody

## Specificity

Human, Mouse, Rat

## Antibody description

Polyclonal antibody to HADH

## Preparation

Antigen: Recombinant fusion protein containing a sequence corresponding to amino acids 1-314 of human HADH (NP\_005318.3).

## Formulation

PBS with 0.02% sodium azide, 50% glycerol, pH7.3.

## Storage

Store at -20°C. Avoid freeze / thaw cycles.

## Clonality

Polyclonal

## Ig Type

Rabbit IgG

## Applications

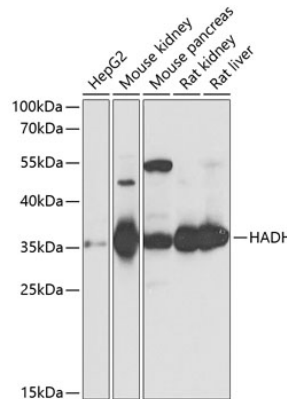
WB, IHC

## Dilutions

WB 1:500 - 1:2000

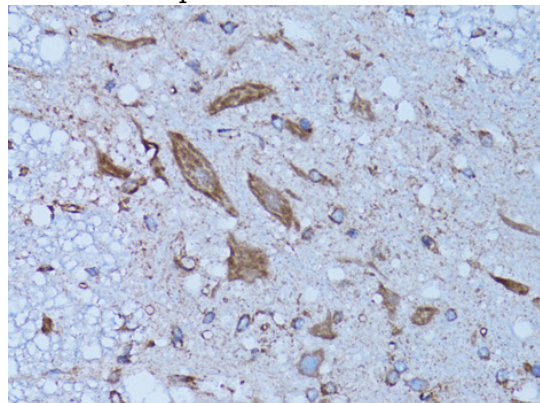
IHC 1:50 - 1:200

## Validations



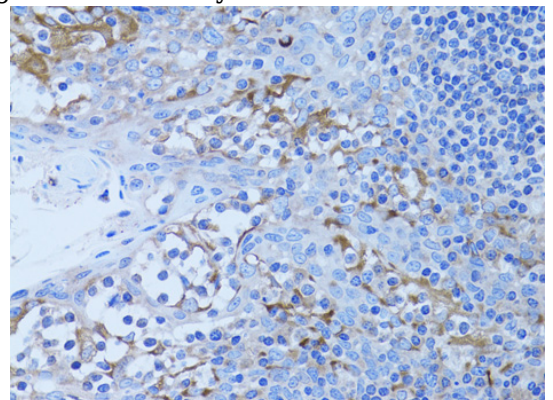
Western blot - HADH Polyclonal Antibody

Western blot analysis of extracts of various cell lines, using HADH antibody at 1:1000 dilution. Secondary antibody: HRP Goat Anti-Rabbit IgG (H+L) at 1:10000 dilution. Lysates/proteins: 25ug per lane. Blocking buffer: 3% nonfat dry milk in TBST. Detection: ECL Basic Kit. Exposure time: 5s.



Immunohistochemistry - HADH Polyclonal Antibody

Immunohistochemistry of paraffin-embedded rat liver using HADH antibody at dilution of 1:100



(40x lens).

# HADH Polyclonal Antibody

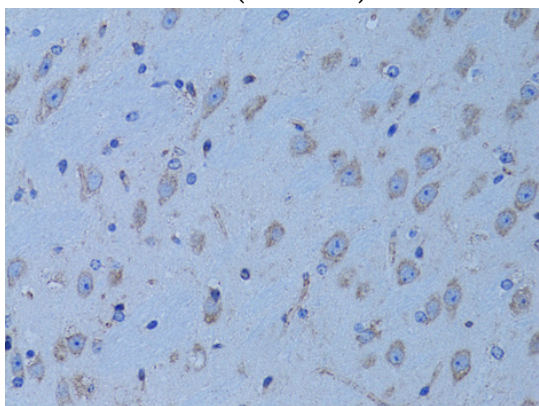


Catalog Number: 160602

---

## Immunohistochemistry - HADH Polyclonal Antibody

Immunohistochemistry of paraffin-embedded human liver cancer using HADH antibody at dilution of 1:100 (40x lens).



## Immunohistochemistry - HADH Polyclonal Antibody

Immunohistochemistry of paraffin-embedded mouse liver using HADH antibody at dilution of 1:100 (40x lens).