

Anti-ATF1/Protein TREB36 antibody



Catalog Number: 101202

Product name

Anti-ATF1/Protein TREB36 antibody

Specificity

Human ATF1 / Protein TREB36

Antibody description

Rabbit polyclonal to ATF1/Protein TREB36

Preparation

Produced in rabbits immunized with a synthetic peptide corresponding to the center region of the Human ATF1 / Protein TREB36, and purified by antigen affinity chromatography.

Formulation

0.2 µm filtered solution in PBS

Storage

This antibody can be stored at 2°C-8°C for one month without detectable loss of activity. Antibody products are stable for twelve months from date of receipt when stored at -20°C to -80°C.

Preservative-Free.

Sodium azide is recommended to avoid contamination (final concentration 0.05%-0.1%). It is toxic to cells and should be disposed of properly. Avoid repeated freeze-thaw cycles.

Clonality

Polyclonal

Ig Type

Rabbit IgG

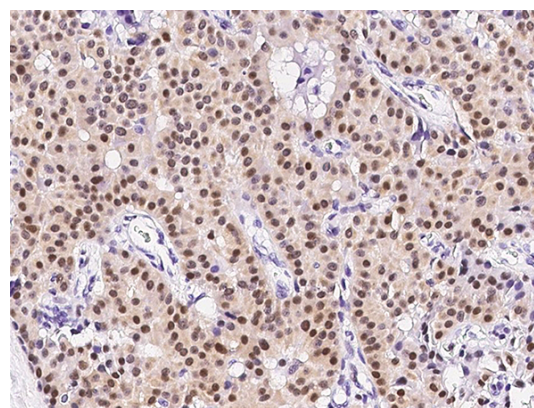
Applications

IHC-P

Dilutions

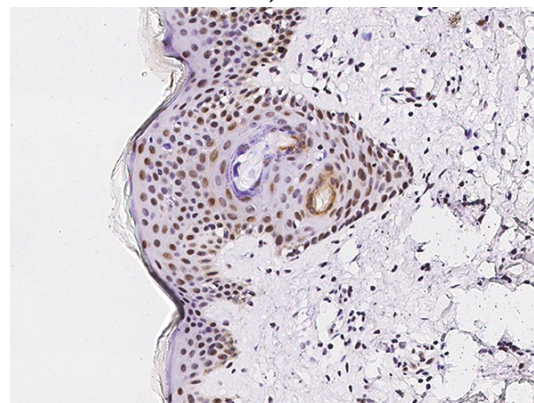
IHC-P: 0.1-2 µg/mL

Validations



ATF1 / Protein TREB36 Antibody, Rabbit PAb, Antigen Affinity Purified, Immunohistochemistry

Immunochemical staining of human ATF1 in human breast carcinoma with rabbit polyclonal antibody (1 µg/mL, formalin-fixed paraffin embedded sections).



ATF1 / Protein TREB36 Antibody, Rabbit PAb, Antigen Affinity Purified, Immunohistochemistry

Immunochemical staining of human ATF1 in human skin with rabbit polyclonal antibody (1 µg/mL, formalin-fixed paraffin embedded sections).