

Anti-EHD1 Rabbit antibody



Catalog Number: 168902

Product name

Anti-EHD1 Rabbit antibody

Specificity

Human, Mouse, Rat

Antibody description

EHD1 Rabbit monoclonal antibody

Preparation

Antigen: A synthetic peptide of human EHD1

Formulation

Supplied in 50nM Tris-Glycine(pH 7.4), 0.15M NaCl, 40%Glycerol, 0.01% sodium azide and 0.05% BSA.

Storage

Store at 4°C short term. Aliquot and store at -20°C long term. Avoid freeze / thaw cycle.

Clonality

Monoclonal

Ig Type

Rabbit IgG

Applications

WB, ICC/IF, FC, IP

Dilutions

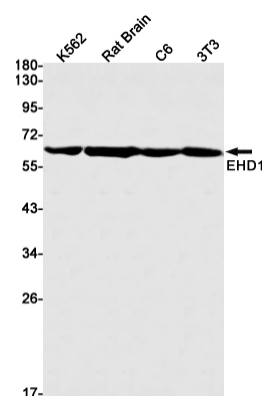
1:2000-1:10000

1:20-1:50

1:100-1:500

1:20-1:50

Validations



Western blot detection of EHD1 in K562, Rat Brain, C6, 3T3 cell lysates using EHD1 Rabbit mAb(1:1000 diluted). Predicted band size: 61kDa. Observed band size: 61kDa.