

# PON2 Polyclonal Antibody



Catalog Number: 161902

## Product name

PON2 Polyclonal Antibody

WB 1:500 - 1:2000

IHC 1:50 - 1:200

IF 1:50 - 1:100

## Specificity

Human, Rat

## Antibody description

Polyclonal antibody to PON2

## Preparation

Antigen: Recombinant fusion protein containing a sequence corresponding to amino acids 1-210 of human PON2 (NP\_000296.2).

## Formulation

PBS with 0.02% sodium azide, 50% glycerol, pH7.3.

## Storage

Store at -20°C. Avoid freeze / thaw cycles.

## Clonality

Polyclonal

## Ig Type

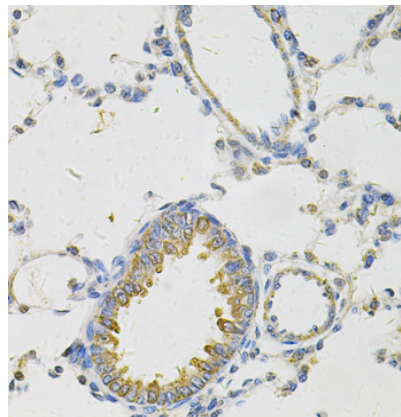
Rabbit IgG

## Applications

WB, IHC, IF

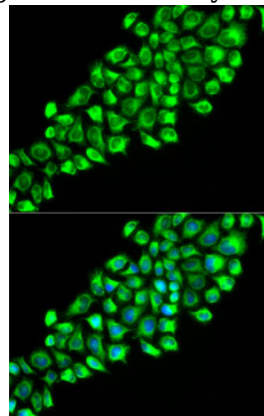
## Dilutions

## Validations



Immunohistochemistry - PON2 Polyclonal Antibody

Immunohistochemistry of paraffin-embedded rat lung using PON2 Antibody at dilution of 1:100



(40x lens).

Immunofluorescence - PON2 Polyclonal Antibody

Immunofluorescence analysis of HeLa cells using PON2 antibody . Blue: DAPI for nuclear staining.