

# Human Epcr/PROCR (Fc Tag) recombinant protein



Catalog Number: 500902

## General Information

### Gene Name Synonym

Activated protein C receptor; Endothelial cell protein C receptor

### Protein Construction

A DNA sequence encoding the human PROCR (AAH14451.1) (Met1-Thr209) was expressed, fused with the Fc region of human IgG1 at the C-terminus.

### Organism

Human

### Expression Host

Human Cells

## QC Testing

### Purity

(20.4+75.1) % as determined by SDS-PAGE

### Endotoxin

< 1.0 EU per  $\mu\text{g}$  of the protein as determined by the LAL method

### Stability

Samples are stable for up to twelve months from date of receipt at  $-70^{\circ}\text{C}$

### Predicted N terminal

Ser 18

### Molecular Mass

The recombinant human PROCR/Fc is a disulfide-

linked homodimer. The reduced monomer comprises 433 amino acids and has a predicted molecular mass of 48.9 kDa. The apparent molecular mass of the protein is approximately 120 and 65 kDa in SDS-PAGE under reducing conditions.

### Formulation

Lyophilized from sterile PBS, pH 7.4

1. 5 % trehalose and mannitol are added as protectants before lyophilization.

2. Please contact us for any concerns or special requirements.

## Usage Guide

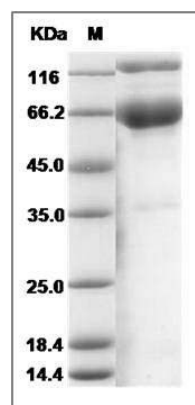
### Storage

Store it under sterile conditions at  $-20^{\circ}\text{C}$  to  $-80^{\circ}\text{C}$ . It is recommended that the protein be aliquoted for optimal storage. Avoid repeated freeze-thaw cycles.

### Reconstitution

Adding sterile water, prepare a stock solution of 0.25 mg/ml. Concentration is measured by UV-Vis.

### SDS-PAGE



Human Epcr / PROCR Protein (Fc Tag) SDS-PAGE