

Human M-CSF/CSF-1 (His Tag) recombinant protein



Catalog Number: 501502

General Information

Gene Name Synonym

Lanimostim; Processed macrophage colony-stimulating factor 1

Protein Construction

A DNA sequence encoding the N-terminal fragment (Met 1-Asn 190) of human CSF1 (P09603-1) was fused with a polyhistidine tag at the C-terminus. Human and Cynomolgus CSF1 sequences are identical.

Organism

Human

Expression Host

Human Cells

QC Testing

Activity

1. Measured by its binding ability in a functional ELISA.
2. Immobilized human CSF1R (Cat:503773) at 10 $\mu\text{g}/\text{mL}$ (100 $\mu\text{l}/\text{well}$) can bind biotinylated human CSF-1 (Cat:501502).

The EC_{50} of biotinylated human CSF-1 (Cat:501502) is 8 ng/mL .

3. Measured in a cell proliferation assay using M-NFS-60 mouse myelogenous leukemia lymphoblast cells.
The ED_{50} for this effect is typically 0.4-2.3 ng/mL .

Purity

> 95 % as determined by SDS-PAGE

Endotoxin

< 1.0 EU per μg of the protein as determined by the LAL method

Stability

Samples are stable for up to twelve months from date of receipt at -70°C

Predicted N terminal

Glu 22

Molecular Mass

The recombinant human CSF1 consists of 169 amino acids and predicts a molecular mass of 19.8 kDa. In SDS-PAGE under reducing conditions, the apparent molecular mass of rhCSF1 is approximately 27-32 kDa band due to glycosylation.

Formulation

- Lyophilized from sterile PBS, pH 7.4
1. 5 % trehalose and mannitol are added as protectants before lyophilization.
 2. Please contact us for any concerns or special requirements.

Usage Guide

Storage

Store it under sterile conditions at -20°C to -80°C . It is recommended that the protein be aliquoted for optimal storage. Avoid repeated freeze-thaw cycles.

Reconstitution

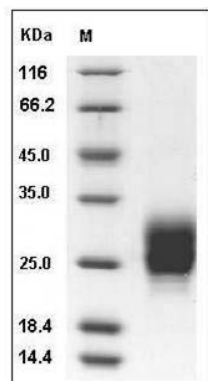
Adding sterile water, prepare a stock solution of 0.25 mg/ml . Concentration is measured by UV-Vis.

SDS-PAGE

Human M-CSF/CSF-1 (His Tag) recombinant protein



Catalog Number: 501502



Human / Cynomolgus M-CSF / CSF-1 Protein (His Tag) SDS-PAGE