

# Anti-Glucose Transporter GLUT1 Rabbit antibody



Catalog Number: 167102

## Product name

Anti-Glucose Transporter GLUT1 Rabbit antibody

## Specificity

Human, Mouse, Rat

## Antibody description

Glucose Transporter GLUT1 Rabbit polyclonal antibody

## Preparation

Antigen: A synthesized peptide derived from human Glucose Transporter GLUT1

## Formulation

Rabbit IgG in phosphate buffered saline , pH 7.4, 150mM NaCl, 0.02% sodium azide and 50% glycerol.

## Storage

Store at 4°C short term. Store at -20°C long term. Avoid freeze / thaw cycle.

## Clonality

Polyclonal

## Ig Type

Rabbit IgG

## Applications

WB, IHC-P, ICC/IF, FC

## Dilutions

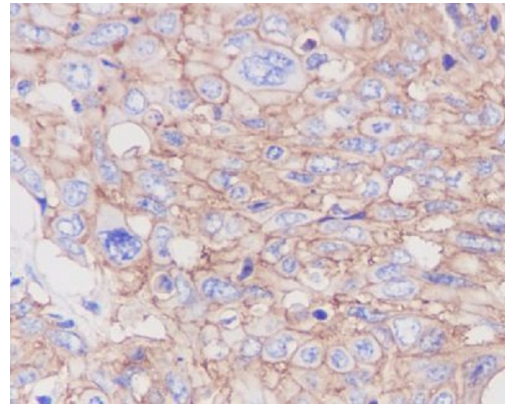
WB: 1/500-1/2000

IHC: 1/50-1/200

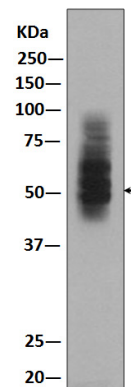
ICC/IF: 1/50-1/200

FC: 1/50

## Validations

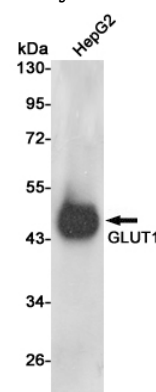


Immunohistochemical analysis of paraffin-embedded human cervix cancer, using GLUT1



Antibody.

Western blot analysis of GLUT1 expression in



HepG2 lysate.

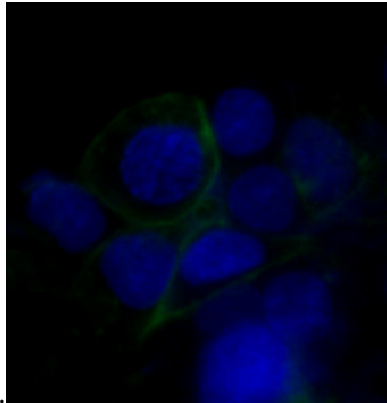
Western blot analysis of GLUT1 expression in HepG2 cell lysates using GLUT1 antibody at 1/500 dilution. Predicted band size: 54KDa. Observed

# Anti-Glucose Transporter GLUT1 Rabbit antibody



Catalog Number: 167102

---



Immunofluorescent analysis of HepG2 cells, using GLUT1 Antibody .

band size:45-60KDa.