

Anti-MX2 antibody



Catalog Number: 176102

Product name

Anti-MX2 antibody

Specificity

Human

Antibody description

Rabbit polyclonal antibody to MX2

Preparation

This antigen of this antibody was synthesized peptide derived from the internal region of human mxb.

Formulation

Liquid, Liquid in PBS containing 50% glycerol, 0.5% BSA and 0.02% sodium azide.

Storage

Store at +4°C after thawing. Aliquot store at -20°C or -80°C. Avoid repeated freeze / thaw cycles.

Clonality

Polyclonal

Ig Type

Rabbit IgG

Applications

WB

Dilutions

WB: 1:500-1:2000

Validations

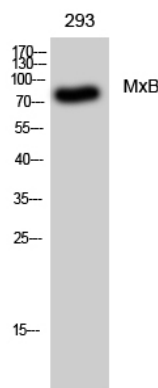


Fig1.; Western Blot analysis of 293 cells using MxB Polyclonal Antibody