

KLHL3 antibody



Catalog Number: 112102

Product name

KLHL3 antibody

WB: 1:200-1:2000

IP: 1:200-1:2000

Specificity

Human, Mouse, Rat; other species not tested.

IHC: 1:20-1:200

Antibody description

KLHL3 Rabbit Polyclonal antibody. Positive WB detected in HepG2 cells, HL-60 cells, human liver tissue, Jurkat cells, mouse liver tissue, mouse thymus tissue, rat liver tissue. Positive IP detected in HepG2 cells. Positive IHC detected in human liver tissue, human tonsillitis tissue. Observed molecular weight by Western-blot: 65 kDa

Preparation

This antibody was obtained by immunization of KLHL3 recombinant protein (Accession Number: BC034035). Purification method: Antigen affinity purified.

Formulation

PBS with 0.02% sodium azide and 50% glycerol pH 7.3.

Storage

Store at -20°C. DO NOT ALIQUOT

Clonality

Polyclonal

Ig Type

Rabbit IgG

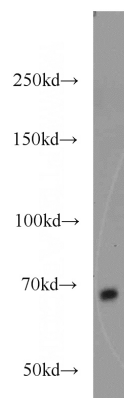
Applications

ELISA, WB, IHC, IP

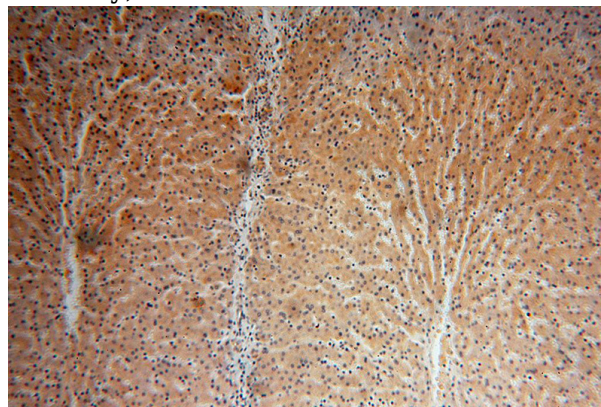
Dilutions

Recommended Dilution:

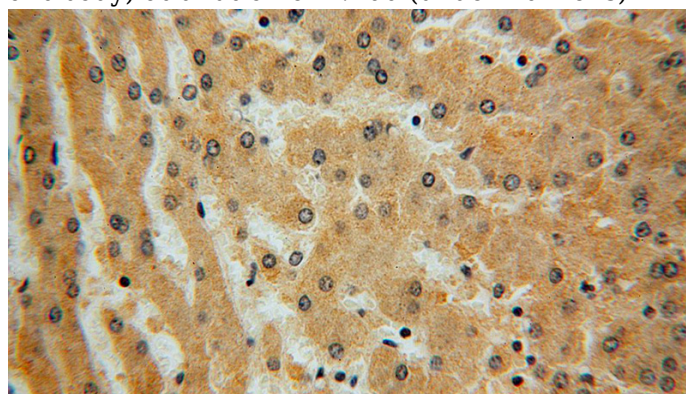
Validations



HepG2 cells were subjected to SDS PAGE followed by western blot with Catalog No:112102(KLHL3 antibody) at dilution of 1:800



Immunohistochemical of paraffin-embedded human liver using Catalog No:112102(KLHL3 antibody) at dilution of 1:100 (under 10x lens)



KLHL3 antibody



Catalog Number: 112102

Immunohistochemical of paraffin-embedded human liver using Catalog No:112102(KLHL3 antibody) at dilution of 1:100 (under 40x lens)

IP Result of anti-KLHL3 (IP:Catalog No:112102, 4ug; Detection:Catalog No:112102 1:700) with HepG2 cells lysate 2800ug.

