

# M6PR Polyclonal Antibody



Catalog Number: 164802

## Product name

M6PR Polyclonal Antibody

## Specificity

Human, Mouse, Rat

## Antibody description

Polyclonal antibody to M6PR

## Preparation

Antigen: Recombinant fusion protein containing a sequence corresponding to amino acids 27-185 of human M6PR (NP\_002346.1).

## Formulation

PBS with 0.02% sodium azide, 50% glycerol, pH7.3.

## Storage

Store at -20°C. Avoid freeze / thaw cycles.

## Clonality

Polyclonal

## Ig Type

Rabbit IgG

## Applications

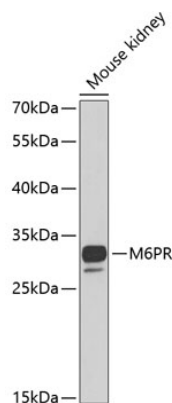
WB, IHC

## Dilutions

WB 1:500 - 1:2000

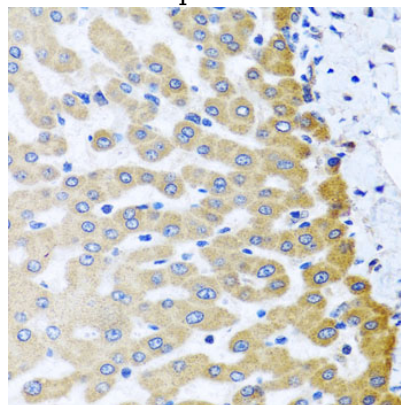
IHC 1:50 - 1:200

## Validations



## Western blot - M6PR Polyclonal Antibody

Western blot analysis of extracts of mouse kidney, using M6PR antibody at 1:1000 dilution. Secondary antibody: HRP Goat Anti-Rabbit IgG (H+L) at 1:10000 dilution. Lysates/proteins: 25ug per lane. Blocking buffer: 3% nonfat dry milk in TBST. Detection: ECL Basic Kit. Exposure time: 40s.



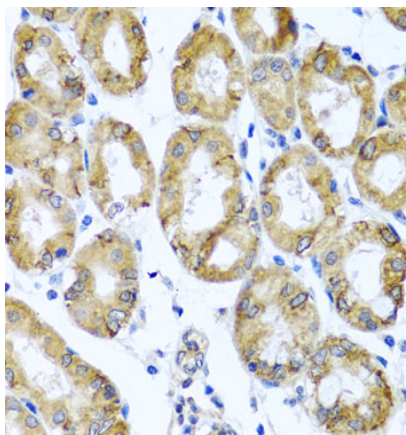
## Immunohistochemistry - M6PR Polyclonal Antibody

Immunohistochemistry of paraffin-embedded human liver injury using M6PR antibody at dilution of 1:100 (40x lens).

# M6PR Polyclonal Antibody

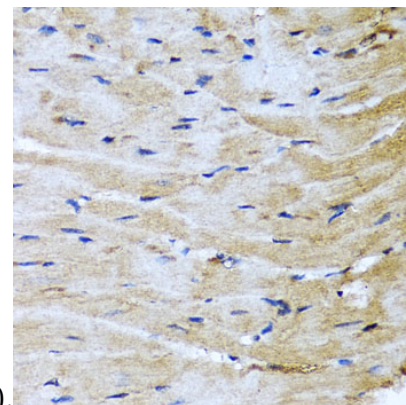
Catalog Number: 164802

---



Immunohistochemistry - M6PR Polyclonal Antibody

Immunohistochemistry of paraffin-embedded human stomach using M6PR antibody at dilution



of 1:100 (40x lens).

Immunohistochemistry - M6PR Polyclonal Antibody

Immunohistochemistry of paraffin-embedded mouse heart using M6PR antibody at dilution of 1:100 (40x lens).