

# PHD1 antibody

Catalog Number: 113802

## Product name

PHD1 antibody

## Specificity

Human, Mouse, Rat; other species not tested.

## Antibody description

PHD1 Rabbit Polyclonal antibody. Positive IF detected in PC-3 cells. Positive WB detected in mouse testis tissue, HEK-293 cells, HeLa cells, human spleen tissue, mouse heart tissue, PC-3 cells. Observed molecular weight by Western-blot: 48kd

## Preparation

This antibody was obtained by immunization of PHD1 recombinant protein (Accession Number: NM\_053046). Purification method: Antigen affinity purified.

## Formulation

PBS with 0.02% sodium azide and 50% glycerol pH 7.3.

## Storage

Store at -20°C. DO NOT ALIQUOT

## Clonality

Polyclonal

## Ig Type

Rabbit IgG

## Applications

ELISA, WB, IF

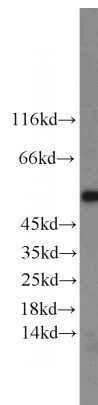
## Dilutions

Recommended Dilution:

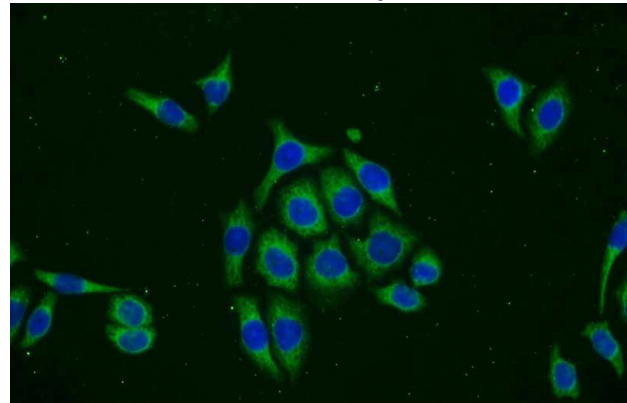
WB: 1:200-1:2000

IF: 1:10-1:100

## Validations



mouse testis tissue were subjected to SDS PAGE followed by western blot with Catalog No:113802(EGLN2 antibody) at dilution of 1:1000



Immunofluorescent analysis of PC-3 cells using Catalog No:113802(EGLN2 Antibody) at dilution of 1:25 and Alexa Fluor 488-conjugated AffiniPure Goat Anti-Rabbit IgG(H+L)