

MRE11 antibody

Catalog Number: 112802

Product name

MRE11 antibody

IP: 1:200-1:2000

IHC: 1:20-1:200

Specificity

Human, Mouse, Rat; other species not tested.

Antibody description

MRE11 Rabbit Polyclonal antibody. Positive IHC detected in human lymphoma tissue. Positive WB detected in A431 cells, HeLa cells, Jurkat cells, K-562 cells. Positive IP detected in HeLa cells. Observed molecular weight by Western-blot: 81 kDa

Preparation

This antibody was obtained by immunization of MRE11 recombinant protein (Accession Number: BC005241). Purification method: Antigen affinity purified.

Formulation

PBS with 0.1% sodium azide and 50% glycerol pH 7.3.

Storage

Store at -20°C. DO NOT ALIQUOT

Clonality

Polyclonal

Ig Type

Rabbit IgG

Applications

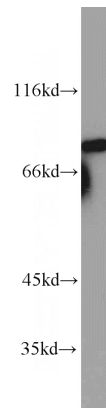
ELISA, WB, IHC, IP

Dilutions

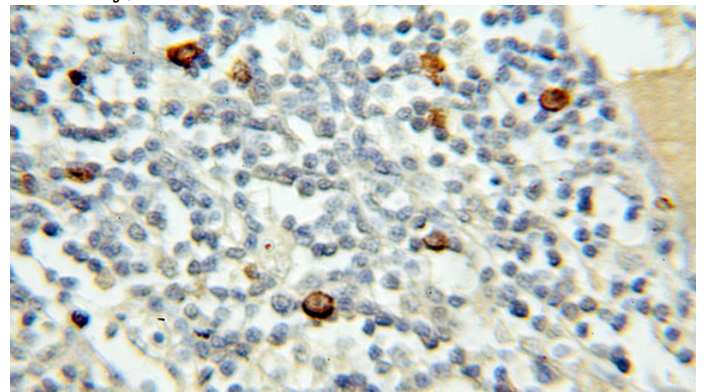
Recommended Dilution:

WB: 1:200-1:2000

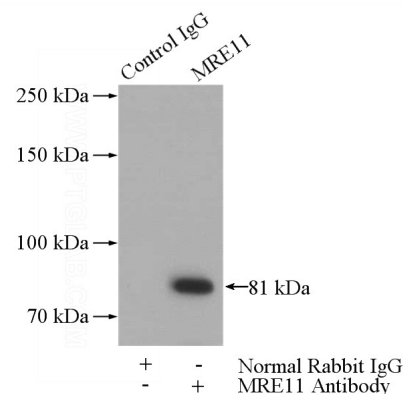
Validations



A431 cells were subjected to SDS PAGE followed by western blot with Catalog No:112802(MRE11A antibody) at dilution of 1:600



Immunohistochemical of paraffin-embedded human lymphoma using Catalog No:112802(MRE11A antibody) at dilution of 1:50 (under 10x lens)



IP Result of anti-MRE11A (IP:Catalog No:112802,

MRE11 antibody



Catalog Number: 112802

4ug; Detection:Catalog No:112802 1:600) with HeLa cells lysate 1200ug.