

General Information

Protein Construction

A DNA sequence encoding the human LRRTM4 extracellular domain (NP_001128217.1) (Met 1-Lys 424) was expressed, fused with a polyhistidine tag at the C-terminus.

Organism

Human

Expression Host

Human Cells

QC Testing

Purity

> 97 % as determined by SDS-PAGE

Endotoxin

< 1.0 EU per μg of the protein as determined by the LAL method

Stability

Samples are stable for up to twelve months from date of receipt at -70°C

Predicted N terminal

Gln 31

Molecular Mass

The recombinant human LRRTM4 consists of 405 amino acids and predicts a molecular mass of 46.6 kDa. In SDS-PAGE under reducing

conditions, the apparent molecular mass of rh LRRTM4 is approximately 65 kDa due to glycosylation.

Formulation

- Lyophilized from sterile PBS, pH 7.4
1. 5 % trehalose and mannitol are added as protectants before lyophilization.
 2. Please contact us for any concerns or special requirements.

Usage Guide

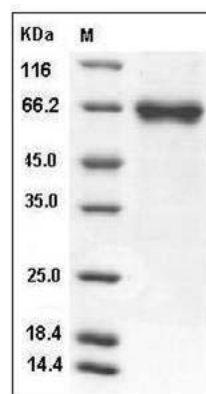
Storage

Store it under sterile conditions at -20°C to -80°C . It is recommended that the protein be aliquoted for optimal storage. Avoid repeated freeze-thaw cycles.

Reconstitution

Adding sterile water, prepare a stock solution of 0.25 mg/ml. Concentration is measured by UV-Vis.

SDS-PAGE



Human LRRTM4 Protein (His Tag) SDS-PAGE