

Smtnl1-phospho-S301 antibody



Catalog Number: 115402

Product name

Smtnl1-phospho-S301 antibody

Specificity

Mouse; other species not tested.

Antibody description

Smtnl1-phospho-S301 Rabbit Polyclonal antibody.
Positive WB detected in mouse bladder tissue.
Observed molecular weight by Western-blot: 50kd

Preparation

This antibody was obtained by immunization of Peptide (Accession Number: NM_024230).
Purification method: Antigen affinity purified.

Formulation

PBS with 0.02% sodium azide and 50% glycerol pH 7.3.

Storage

Store at -20°C. DO NOT ALIQUOT

Clonality

Polyclonal

Ig Type

Rabbit IgG

Applications

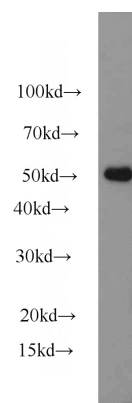
ELISA, WB

Dilutions

Recommended Dilution:

WB: 1:200-1:2000

Validations



mouse bladder tissue were subjected to SDS PAGE followed by western blot with Catalog No:115402(Smtnl1-phospho-S301 antibody) at dilution of 1:500