

Anti-EPHA10 antibody



Catalog Number: 175402

Product name

Anti-EPHA10 antibody

WB:1:500-2000

IHC-P:1:400-800

Specificity

Human, Mouse, Rat, Chicken, Dog, Pig, Cow, Horse, Rabbit, Guinea Pig

Antibody description

Rabbit polyclonal antibody to EPHA10

Preparation

This antigen of this antibody was klh conjugated synthetic peptide derived from human epha10 151-250/1008

Formulation

Liquid, 0.01M TBS(pH7.4) with 1% BSA, 0.03% Proclin300 and 50% Glycerol.

Storage

Store at -20°C for one year. Avoid repeated freeze/thaw cycles. The lyophilized antibody is stable at room temperature for at least one month and for greater than a year when kept at -20°C. When reconstituted in sterile pH 7.4 0.01M PBS or diluent of antibody the antibody is stable for at least two weeks at 2-4°C.

Clonality

Polyclonal

Ig Type

Rabbit IgG

Applications

WB, IHC-P

Dilutions

Validations

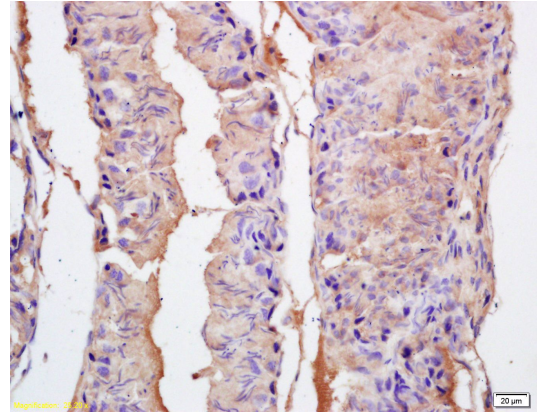


Fig1: Tissue/cell: rat testis tissue; 4% Paraformaldehyde-fixed and paraffin-embedded;; Antigen retrieval: citrate buffer (0.01M, pH 6.0), Boiling bathing for 15min; Block endogenous peroxidase by 3% Hydrogen peroxide for 30min; Blocking buffer (normal goat serum,C-0005) at 37°C for 20 min;; Incubation: Anti-EPHA10 Polyclonal Antibody, Unconjugated 1:200, overnight at 4°C, followed by conjugation to the secondary antibody(SP-0023) and DAB(C-0010)

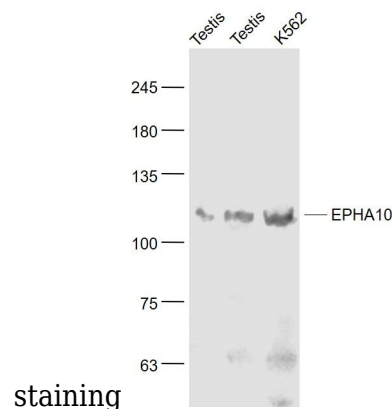


Fig2: Sample:; Testis (Mouse) Lysate at 40 ug; Testis (Rat) Lysate at 40 ug; K562(Human) Cell Lysate at 30 ug; Primary: Anti- EPHA10 at 1/1000 dilution; Secondary: IRDye800CW Goat Anti-Rabbit IgG at 1/20000 dilution; Predicted band size: 107 kD; Observed band size: 107 kD