

Product name

ERBB3 antibody

Specificity

Human, Mouse, Rat; other species not tested.

Antibody description

ERBB3 Rabbit Polyclonal antibody. Positive IHC detected in human breast cancer tissue, human prostate cancer tissue. Observed molecular weight by Western-blot: 185kd

Preparation

This antibody was obtained by immunization of ERBB3 recombinant protein (Accession Number: BC002706). Purification method: Antigen affinity purified.

Formulation

PBS with 0.1% sodium azide and 50% glycerol pH 7.3.

Storage

Store at -20°C. DO NOT ALIQUOT

Clonality

Polyclonal

Ig Type

Rabbit IgG

Applications

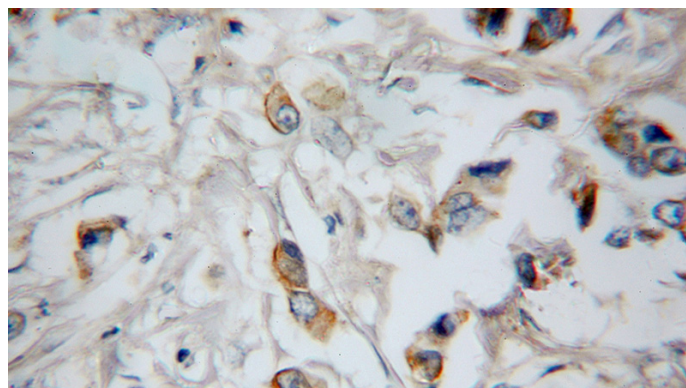
ELISA, IHC

Dilutions

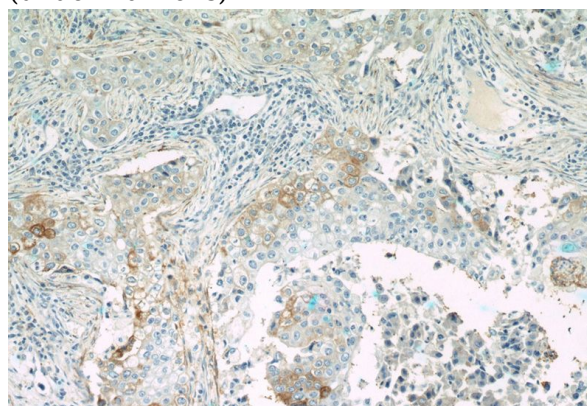
Recommended Dilution:

IHC: 1:20-1:200

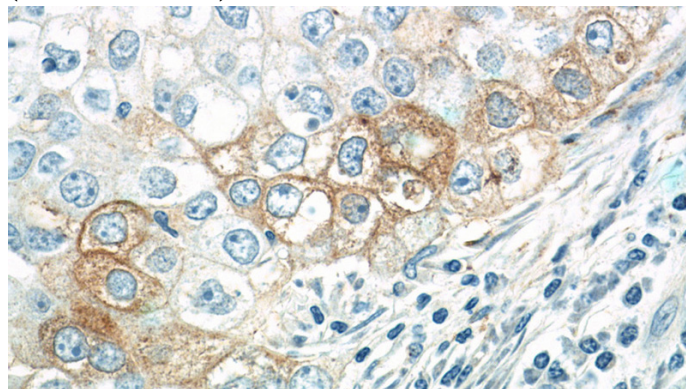
Validations



Immunohistochemical of paraffin-embedded human prostate cancer using Catalog No:110402(ERBB3 antibody) at dilution of 1:10 (under 40x lens)



Immunohistochemistry of paraffin-embedded human breast cancer tissue slide using Catalog No:110402(ERBB3 Antibody) at dilution of 1:200 (under 10x lens)



Immunohistochemistry of paraffin-embedded human breast cancer tissue slide using Catalog No:110402(ERBB3 Antibody) at dilution of 1:200 (under 40x lens)