

Anti-JPH2 antibody



Catalog Number: 175002

Product name

Anti-JPH2 antibody

Specificity

Human, Mouse, Rat

Antibody description

Rabbit polyclonal antibody to JPH2

Preparation

This antigen of this antibody was peptide

Formulation

Liquid, 1*PBS (pH7.4), 0.2% BSA, 25% Glycerol.
Preservative: 0.05% Sodium Azide.

Storage

Store at +4°C after thawing. Aliquot store at -20°C or -80°C. Avoid repeated freeze / thaw cycles.

Clonality

Polyclonal

Ig Type

Rabbit IgG

Applications

WB, ICC, IHC-P, FC

Dilutions

WB: 1:2000

Validations

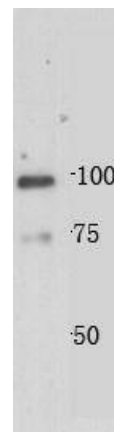


Fig1: Western blot analysis on mouse heart using anti-JPH-2 polyclonal antibody.