

# POLG2 antibody

Catalog Number: 114002

## Product name

POLG2 antibody

IHC: 1:20-1:200

IF: 1:10-1:100

## Specificity

Human, Mouse, Rat; other species not tested.

## Antibody description

POLG2 Rabbit Polyclonal antibody. Positive IF detected in COLO 320 cells. Positive IHC detected in human colon cancer tissue. Positive WB detected in COLO 320 cells, HeLa cells, mouse colon tissue, Transfected HEK-293 cells. Observed molecular weight by Western-blot: 55 kDa

## Preparation

This antibody was obtained by immunization of POLG2 recombinant protein (Accession Number: NM\_007215). Purification method: Antigen affinity purified.

## Formulation

PBS with 0.1% sodium azide and 50% glycerol pH 7.3.

## Storage

Store at -20°C. DO NOT ALIQUOT

## Clonality

Polyclonal

## Ig Type

Rabbit IgG

## Applications

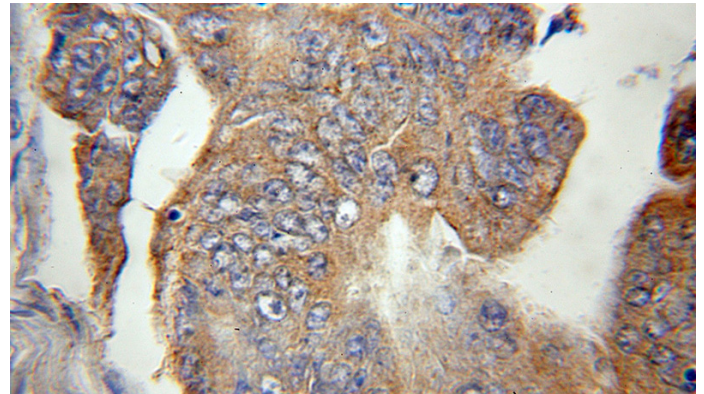
ELISA, IHC, IF, WB

## Dilutions

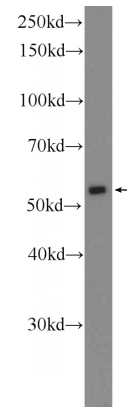
Recommended Dilution:

WB: 1:500-1:5000

## Validations

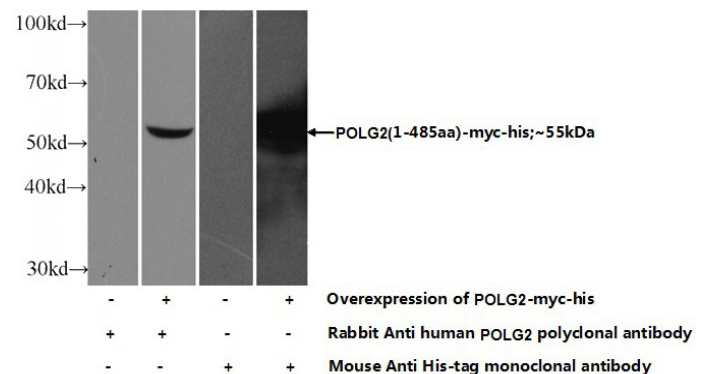


Immunohistochemical of paraffin-embedded human colon cancer using Catalog No:114002(POLG2 antibody) at dilution of 1:100



(under 10x lens)

COLO 320 cells were subjected to SDS PAGE followed by western blot with Catalog No:114002(POLG2 Antibody) at dilution of 1:1000



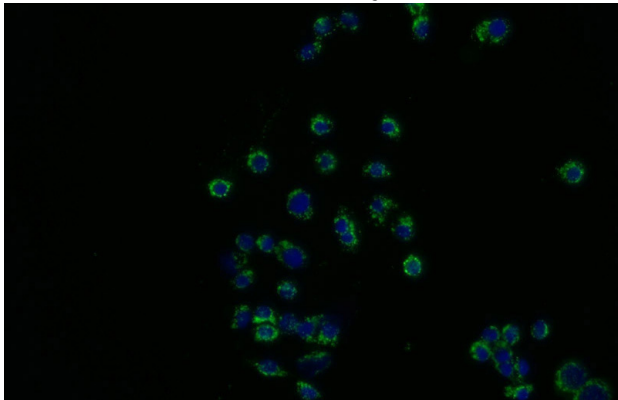
Transfected HEK-293 cells were subjected to SDS PAGE followed by western blot with Catalog

# POLG2 antibody

Catalog Number: 114002

---

No:114002(POLG2 Antibody) at dilution of 1:800



Immunofluorescent analysis of COLO 320 cells using Catalog No:114002(POLG2 Antibody) at dilution of 1:25 and Alexa Fluor 488-conjugated AffiniPure Goat Anti-Rabbit IgG(H+L)