

MYSM1-Specific antibody

Catalog Number: 113002

Product name

MYSM1-Specific antibody

IP: 1:200-1:1000

IHC: 1:20-1:200

Specificity

Human; other species not tested.

IF: 1:50-1:500

Antibody description

MYSM1-Specific Rabbit Polyclonal antibody. Positive IP detected in HeLa cells. Positive WB detected in HeLa cells, A549 cells, HEK-293 cells, HepG2 cells. Positive IHC detected in human spleen tissue. Positive IF detected in HeLa cells. Observed molecular weight by Western-blot: 81 kDa

Preparation

This antibody was obtained by immunization of Peptide (Accession Number: NM_001085487). Purification method: Antigen affinity purified.

Formulation

PBS with 0.02% sodium azide and 50% glycerol pH 7.3.

Storage

Store at -20°C. DO NOT ALIQUOT

Clonality

Polyclonal

Ig Type

Rabbit IgG

Applications

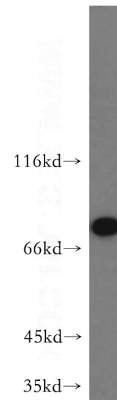
ELISA, WB, IHC, IP, IF

Dilutions

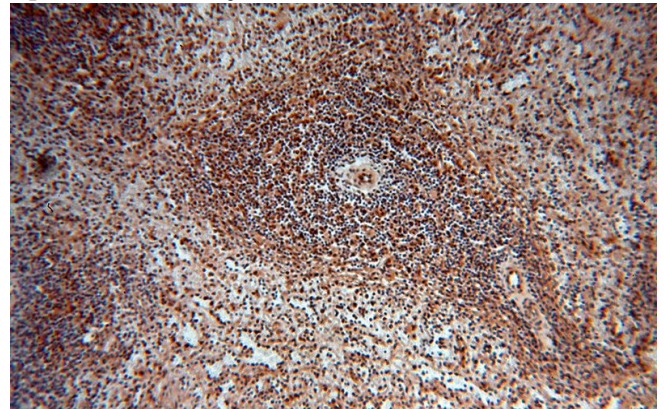
Recommended Dilution:

WB: 1:500-1:5000

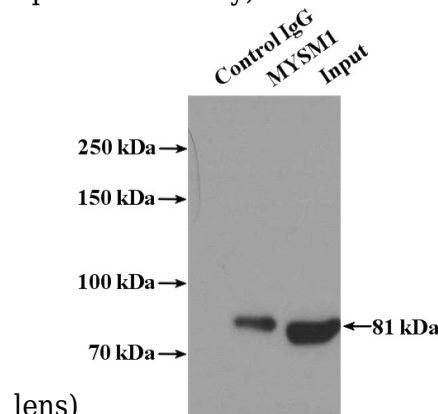
Validations



HeLa cells were subjected to SDS PAGE followed by western blot with Catalog No:113002(MYSM1-Specific antibody) at dilution of 1:300



Immunohistochemical of paraffin-embedded human spleen using Catalog No:113002(MYSM1-Specific antibody) at dilution of 1:100 (under 10x

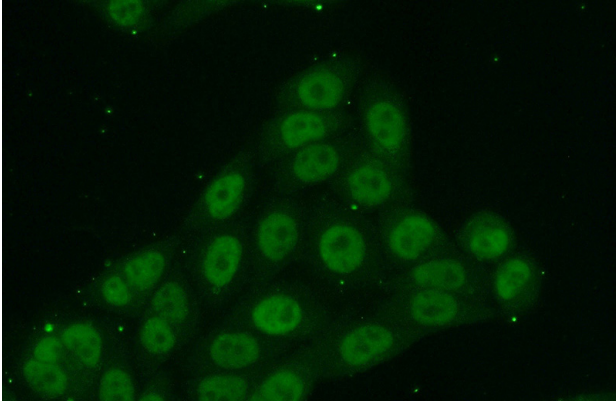


MYSM1-Specific antibody



Catalog Number: 113002

IP Result of anti-MYSM1-Specific (IP:Catalog No:113002, 4ug; Detection:Catalog No:113002 1:300) with HeLa cells lysate 3200ug.



Immunofluorescent analysis of (10% Formaldehyde) fixed HeLa cells using Catalog No:113002(MYSM1-Specific Antibody) at dilution of 1:50 and Alexa Fluor 488-conjugated AffiniPure Goat Anti-Rabbit IgG(H+L)