

KIF18A antibody

Catalog Number: 112002

Product name

KIF18A antibody

IP: 1:200-1:2000

IHC: 1:20-1:200

Specificity

Human; other species not tested.

Antibody description

KIF18A Rabbit Polyclonal antibody. Positive IHC detected in human liver tissue. Positive WB detected in Jurkat cells, HeLa cells. Positive IP detected in Jurkat cells. Observed molecular weight by Western-blot: 102kd

Preparation

This antibody was obtained by immunization of KIF18A recombinant protein (Accession Number: NM_031217). Purification method: Antigen affinity purified.

Formulation

PBS with 0.02% sodium azide and 50% glycerol pH 7.3.

Storage

Store at -20°C. DO NOT ALIQUOT

Clonality

Polyclonal

Ig Type

Rabbit IgG

Applications

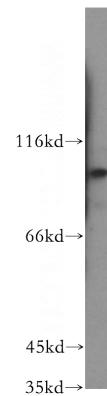
ELISA, WB, IHC, IP

Dilutions

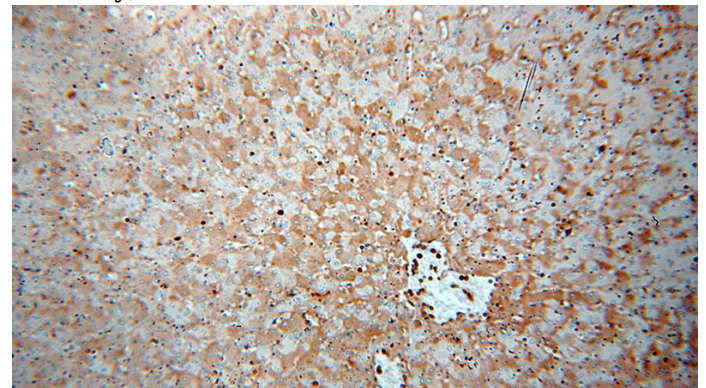
Recommended Dilution:

WB: 1:500-1:5000

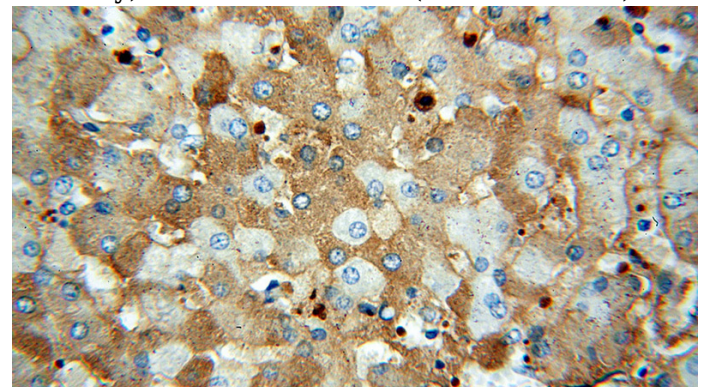
Validations



Jurkat cells were subjected to SDS PAGE followed by western blot with Catalog No:112002(KIF18A antibody) at dilution of 1:500



Immunohistochemical of paraffin-embedded human liver using Catalog No:112002(KIF18A antibody) at dilution of 1:100 (under 10x lens)

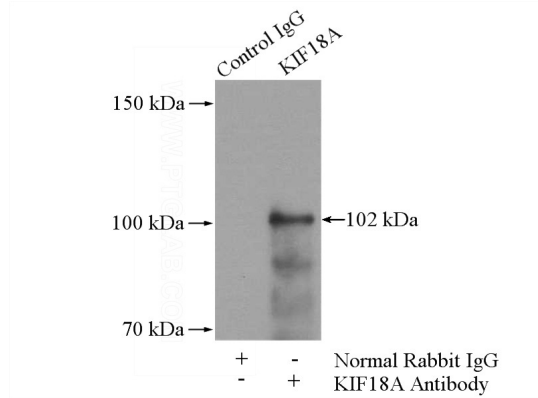


Immunohistochemical of paraffin-embedded human liver using Catalog No:112002(KIF18A antibody) at dilution of 1:100 (under 10x lens)

KIF18A antibody

Catalog Number: 112002

antibody) at dilution of 1:100 (under 40x lens)



IP Result of anti-KIF18A (IP:Catalog No:112002, 4ug; Detection:Catalog No:112002 1:500) with Jurkat cells lysate 2400ug.