

# Rhesus Semaphorin 4D/SEMA4D/CD100 (His Tag) recombinant protein



Catalog Number: 502002

## General Information

### Gene Name Synonym

Semaphorin-4D isoform 1

### Protein Construction

A DNA sequence encoding the rhesus SEMA4D (EHH24221.1) (Met1-Arg734) was expressed with a polyhistidine tag at the C-terminus.

### Organism

Rhesus

### Expression Host

Human Cells

## QC Testing

### Purity

> 90 % as determined by SDS-PAGE

### Endotoxin

< 1.0 EU per  $\mu\text{g}$  of the protein as determined by the LAL method

### Stability

Samples are stable for up to twelve months from date of receipt at  $-70^{\circ}\text{C}$

### Predicted N terminal

Met 22

### Molecular Mass

The recombinant rhesus SEMA4D comprises 724 amino acids and has a calculated molecular mass of 80.7 KDa.

### Formulation

Lyophilized from sterile PBS, pH 7.4.

1. 5 % trehalose and mannitol are added as protectants before lyophilization.

2. Please contact us for any concerns or special requirements.

## Usage Guide

### Storage

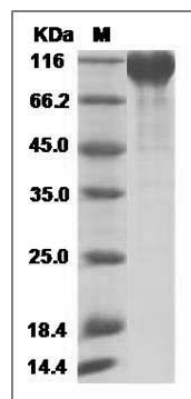
Store it under sterile conditions at  $-20^{\circ}\text{C}$  to  $-80^{\circ}\text{C}$ .

It is recommended that the protein be aliquoted for optimal storage. Avoid repeated freeze-thaw cycles.

### Reconstitution

Adding sterile water, prepare a stock solution of 0.25 mg/ml. Concentration is measured by UV-Vis.

### SDS-PAGE



Cynomolgus Semaphorin 4D / SEMA4D / CD100 Protein (His Tag) SDS-PAGE